

NHLH1 Rabbit mAb

Catalog No.: A24828 **Recombinant**

Basic Information

Observed MW

22kDa/

Calculated MW

15kDa

Category

Primary antibody

Applications

WB,IF/ICC,IP,ELISA

Cross-Reactivity

Human

CloneNo number

ARC64632

Background

The helix-loop-helix (HLH) proteins are a family of putative transcription factors, some of which have been shown to play an important role in growth and development of a wide variety of tissues and species. Four members of this family have been clearly implicated in tumorigenesis via their involvement in chromosomal translocations in lymphoid tumors: MYC (MIM 190080), LYL1 (MIM 151440), E2A (MIM 147141), and SCL (MIM 187040).

Recommended Dilutions

WB 1:1000 - 1:4000

IF/ICC 1:200 - 1:400

IP 0.5µg-4µg antibody for
200µg-400µg extracts of
whole cells

ELISA Recommended starting
concentration is 1 µg/mL.
Please optimize the
concentration based on
your specific assay
requirements.

Contact

☎ | 400-999-6126

✉ | cn.market@abclonal.com.cn

🌐 | www.abclonal.com.cn

Immunogen Information

Gene ID

4807

Swiss Prot

Q02575

Immunogen

Recombinant fusion protein containing a sequence corresponding to amino acids 1-60 of human NHLH1 (NP_005589.1).

Synonyms

HEN1; NSCL; NSCL1; bHLHa35; NHLH1

Product Information

Source

Rabbit

Isotype

IgG

Purification

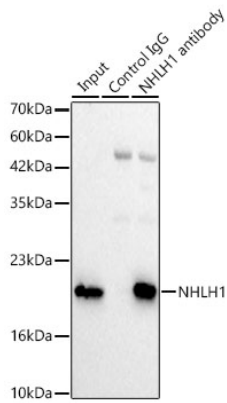
Affinity purification

Storage

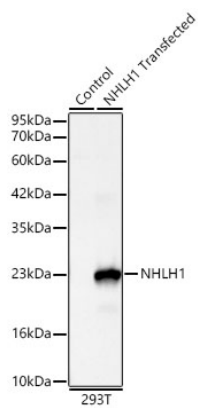
Store at -20°C. Avoid freeze / thaw cycles.

Buffer: PBS with 0.05% proclin300,0.05% BSA,50% glycerol,pH7.3.

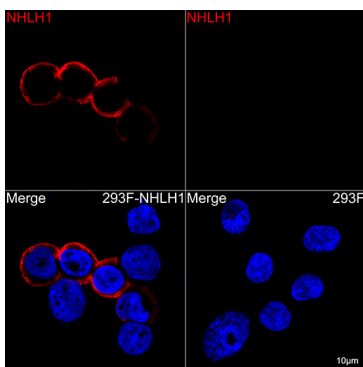
Validation Data



Immunoprecipitation of NHLH1 in 300 µg extracts from 293F cells transfected with NHLH1 using 2 µg NHLH1 Rabbit mAb (A24828). Western blot analysis was performed using NHLH1 Rabbit mAb (A24828) at 1:1000 dilution.



Western blot analysis of lysates from wild type (WT) and 293T cells transfected with NHLH1, using NHLH1 Rabbit mAb (A24828) at 1:1000 dilution. Secondary antibody: HRP-conjugated Goat anti-Rabbit IgG (H+L) (AS014) at 1:10000 dilution. Lysates/proteins: 25µg per lane. Blocking buffer: 3% nonfat dry milk in TBST. Detection: ECL Basic Kit (RM00020). Exposure time: 15s.



Confocal imaging of 293F cells transfected with NHLH1 using NHLH1 Rabbit mAb (A24828, dilution 1:200) followed by a further incubation with Cy3 Goat Anti-Rabbit IgG (H+L) (AS007, dilution 1:500) (Red). DAPI was used for nuclear staining (blue). Objective: 100x.