

# Aldehyde dehydrogenase 5-A1/SSADH/ALDH5A1 Rabbit mAb

Catalog No.: A24829 **Recombinant**

## Basic Information

### Observed MW

54kDa

### Calculated MW

57kDa

### Category

Primary antibody

### Applications

ELISA, WB, IHC-P, IF/ICC

### Cross-Reactivity

Human, Mouse, Rat

### CloneNo number

ARC64127

## Background

This protein belongs to the aldehyde dehydrogenase family of proteins. This gene encodes a mitochondrial NAD(+)-dependent succinic semialdehyde dehydrogenase. A deficiency of this enzyme, known as 4-hydroxybutyricaciduria, is a rare inborn error in the metabolism of the neurotransmitter 4-aminobutyric acid (GABA). In response to the defect, physiologic fluids from patients accumulate GHB, a compound with numerous neuromodulatory properties. Two transcript variants encoding distinct isoforms have been identified for this gene.

## Recommended Dilutions

<b>WB</b>	1:1000 - 1:5000
<b>IHC-P</b>	1:50 - 1:200
<b>IF/ICC</b>	1:50 - 1:200

## Immunogen Information

### Gene ID

7915

### Swiss Prot

P51649

### Immunogen

Recombinant Protein corresponding to a sequence within amino acids 777-976 of human Aldehyde dehydrogenase 5-A1/SSADH/ALDH5A1(NP\_001071.1).

### Synonyms

SSDH; SSADH; Aldehyde dehydrogenase 5-A1/SSADH/ALDH5A1?

## Contact

☎ | 400-999-6126

✉ | [cn.market@abclonal.com.cn](mailto:cn.market@abclonal.com.cn)

🌐 | [www.abclonal.com.cn](http://www.abclonal.com.cn)

## Product Information

### Source

Rabbit

### Isotype

IgG

### Purification

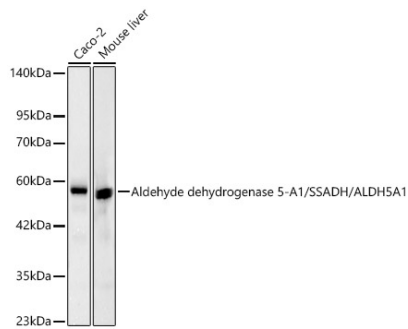
Affinity purification

### Storage

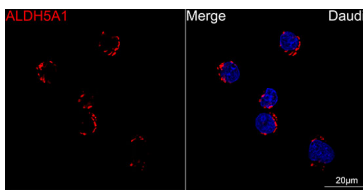
Store at -20°C. Avoid freeze / thaw cycles.

Buffer: PBS with 0.05% proclin300, 0.05% BSA, 50% glycerol, pH7.3.

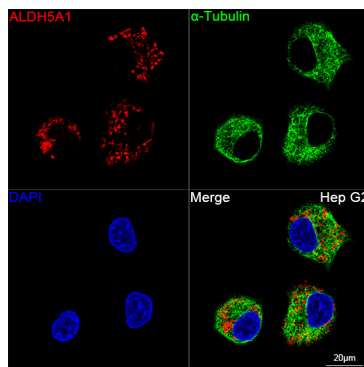
## Validation Data



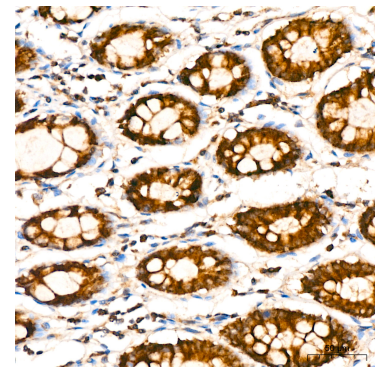
Western blot analysis of various lysates, using Aldehyde dehydrogenase 5-A1/SSADH/ALDH5A1 Rabbit mAb (A24829) at 1:2000 dilution.  
Secondary antibody: HRP Goat Anti-Rabbit IgG (H+L) (AS014) at 1:10000 dilution.  
Lysates/proteins: 25ug per lane.  
Blocking buffer: 3% nonfat dry milk in TBST.  
Detection: ECL Basic Kit (RM00020).  
Exposure time: 20s.



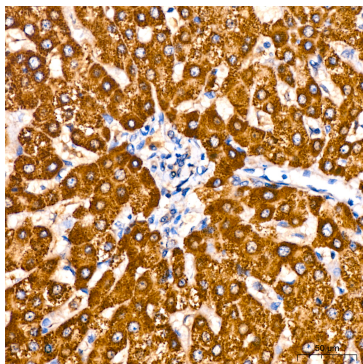
Confocal imaging of Daudi cells using Aldehyde dehydrogenase 5-A1/SSADH/ALDH5A1 Rabbit mAb (A24829, dilution 1:200) followed by a further incubation with Cy3 Goat Anti-Rabbit IgG (H+L) (AS007, dilution 1:500) (Red). DAPI was used for nuclear staining (blue). Objective: 100x.



Confocal imaging of Hep G2 cells using Aldehyde dehydrogenase 5-A1/SSADH/ALDH5A1 Rabbit mAb (A24829, dilution 1:200) followed by a further incubation with Cy3 Goat Anti-Rabbit IgG (H+L) (AS007, dilution 1:500) (Red). The cells were counterstained with alpha-Tubulin Mouse mAb (AC012, dilution 1:400) followed by incubation with ABflo® 488-conjugated Goat Anti-Mouse IgG (H+L) Ab (AS076, dilution 1:500) (Green). DAPI was used for nuclear staining (blue). Objective: 100x.



Immunohistochemistry analysis of Aldehyde dehydrogenase 5-A1/SSADH/ALDH5A1 in paraffin-embedded human colon tissue using Aldehyde dehydrogenase 5-A1/SSADH/ALDH5A1 Rabbit mAb (A24829) at a dilution of 1:200 (40x lens). Perform high pressure antigen retrieval with 10 mM citrate buffer pH 6.0 before commencing with IHC staining protocol.



Immunohistochemistry analysis of Aldehyde dehydrogenase 5-A1/SSADH/ALDH5A1 in paraffin-embedded human liver tissue using Aldehyde dehydrogenase 5-A1/SSADH/ALDH5A1 Rabbit mAb (A24829) at a dilution of 1:200 (40x lens). Perform high pressure antigen retrieval with 10 mM citrate buffer pH 6.0 before commencing with IHC staining protocol.