

# NLRP3 Rabbit pAb

**Catalog No.: A24833**

## Basic Information

**Observed MW**

118kDa

**Calculated MW**83kDa/105kDa/111kDa/112kDa/115kDa/  
118kDa**Category**

Primary antibody

**Applications**

WB,IF/ICC

**Cross-Reactivity**

Human, Mouse

## Background

This gene encodes a pyrin-like protein containing a pyrin domain, a nucleotide-binding site (NBS) domain, and a leucine-rich repeat (LRR) motif. This protein interacts with the apoptosis-associated speck-like protein PYCARD/ASC, which contains a caspase recruitment domain, and is a member of the NALP3 inflammasome complex. This complex functions as an upstream activator of NF-kappaB signaling, and it plays a role in the regulation of inflammation, the immune response, and apoptosis. Mutations in this gene are associated with familial cold autoinflammatory syndrome (FCAS), Muckle-Wells syndrome (MWS), chronic infantile neurological cutaneous and articular (CINCA) syndrome, and neonatal-onset multisystem inflammatory disease (NOMID). Multiple alternatively spliced transcript variants encoding distinct isoforms have been identified for this gene. Alternative 5' UTR structures are suggested by available data; however, insufficient evidence is available to determine if all of the represented 5' UTR splice patterns are biologically valid.

## Recommended Dilutions

**WB** 1:1000 - 1:5000**IF/ICC** 1:50 - 1:200

## Immunogen Information

**Gene ID**

114548

**Swiss Prot**

Q96P20

**Immunogen**

A synthetic peptide corresponding to a sequence within amino acids 930-1036 human NLRP3(NP\_004886.3).

**Synonyms**

NLRP3; AGTAVPRL; AII; AVP; C1orf7; CIAS1; CLR1.1; FCAS; FCAS1; FCU; MWS; NALP3; PYPAF1; NLR family pyrin domain containing 3

## Contact

 | 400-999-6126 | [cn.market@abclonal.com.cn](mailto:cn.market@abclonal.com.cn) | [www.abclonal.com.cn](http://www.abclonal.com.cn)

## Product Information

**Source**

Rabbit

**Isotype**

IgG

**Purification**

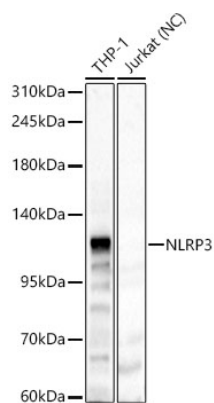
Affinity purification

**Storage**

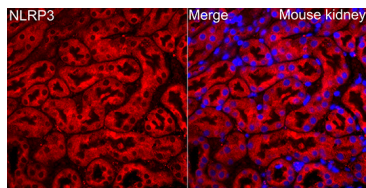
Store at -20°C. Avoid freeze / thaw cycles.

Buffer: PBS with 0.05% proclin300,50% glycerol,pH7.3.

## Validation Data



Western blot analysis of various lysates using NLRP3 Rabbit pAb (A24833) at 1:2000 dilution.  
Secondary antibody:HRP Goat Anti-Rabbit IgG (H+L)(AS014) at 1:10000 dilution.  
Lysates/proteins: 25 µg per lane.  
Blocking buffer: 3% nonfat dry milk in TBST.  
Detection:ECL Basic Kit (RM00020).  
Negative control (NC): Jurkat.  
Exposure time: 10s.



Immunofluorescence analysis of paraffin-embedded mouse kidney using NLRP3 Rabbit pAb (A24833) at dilution of 1:200 (40x lens).  
Secondary antibody: Cy3 Goat Anti-Rabbit IgG (H+L) (AS007) at 1:500 dilution. Blue: DAPI for nuclear staining.