

IGF2 Rabbit pAb

Catalog No.: A24842

Basic Information

Observed MW

Refer to figures

Calculated MW

20kDa/26kDa

Category

Primary antibody

Applications

IF/ICC

Cross-Reactivity

Human, Mouse, Rat

Background

This gene encodes a member of the insulin family of polypeptide growth factors, which are involved in development and growth. It is an imprinted gene, expressed only from the paternal allele, and epigenetic changes at this locus are associated with Wilms tumour, Beckwith-Wiedemann syndrome, rhabdomyosarcoma, and Silver-Russell syndrome. A read-through INS-IGF2 gene exists, whose 5' region overlaps the INS gene and the 3' region overlaps this gene. Alternatively spliced transcript variants encoding different isoforms have been found for this gene.

Recommended Dilutions

IF/ICC 1:50 - 1:200

Immunogen Information

Gene ID

3481

Swiss Prot

P01344

Immunogen

A synthetic peptide corresponding to a sequence within amino acids 70-180 of human IGF2 (P01344).

Synonyms

IGF2; C11orf43; GRDF; IGF-II; PP9974; insulin like growth factor 2

Contact

☎ | 400-999-6126

✉ | cn.market@abclonal.com.cn

🌐 | www.abclonal.com.cn

Product Information

Source

Rabbit

Isotype

IgG

Purification

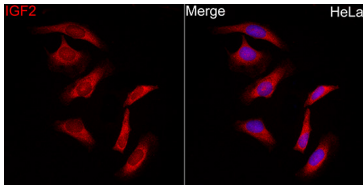
Affinity purification

Storage

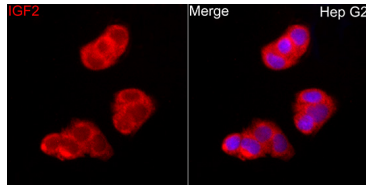
Store at -20°C. Avoid freeze / thaw cycles.

Buffer: PBS with 0.05% proclin300,50% glycerol,pH7.3.

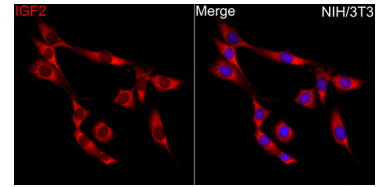
Validation Data



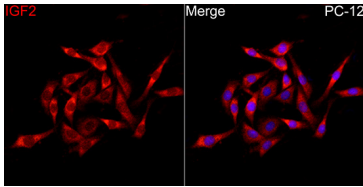
Immunofluorescence analysis of HeLa cells using IGF2 Rabbit pAb (A24842) at dilution of 1:100 (40x lens). Secondary antibody: Cy3 Goat Anti-Rabbit IgG (H+L) (AS007) at 1:500 dilution. Blue: DAPI for nuclear staining.



Immunofluorescence analysis of HepG2 cells using IGF2 Rabbit pAb (A24842) at dilution of 1:100 (40x lens). Secondary antibody: Cy3 Goat Anti-Rabbit IgG (H+L) (AS007) at 1:500 dilution. Blue: DAPI for nuclear staining.



Immunofluorescence analysis of NIH/3T3 cells using IGF2 Rabbit pAb (A24842) at dilution of 1:100 (40x lens). Secondary antibody: Cy3 Goat Anti-Rabbit IgG (H+L) (AS007) at 1:500 dilution. Blue: DAPI for nuclear staining.



Immunofluorescence analysis of PC-12 cells using IGF2 Rabbit pAb (A24842) at dilution of 1:100 (40x lens). Secondary antibody: Cy3 Goat Anti-Rabbit IgG (H+L) (AS007) at 1:500 dilution. Blue: DAPI for nuclear staining.