

Human albumin Rabbit pAb

Catalog No.: A24843

Basic Information

Observed MW

69kDa

Calculated MW

45kDa/47kDa/69kDa

Category

Primary antibody

Applications

WB, IF/ICC

Cross-Reactivity

Human, Mouse

Background

Albumin is a soluble, monomeric protein which comprises about one-half of the blood serum protein. Albumin functions primarily as a carrier protein for steroids, fatty acids, and thyroid hormones and plays a role in stabilizing extracellular fluid volume. Albumin is a globular unglycosylated serum protein of molecular weight 65,000. Albumin is synthesized in the liver as prealbumin which has an N-terminal peptide that is removed before the nascent protein is released from the rough endoplasmic reticulum. The product, prealbumin, is in turn cleaved in the Golgi vesicles to produce the secreted albumin.

Recommended Dilutions

WB 1:500 - 1:1000

IF/ICC 1:50 - 1:200

Immunogen Information

Gene ID

213

Swiss Prot

P02768

Immunogen

Recombinant fusion protein containing a sequence corresponding to amino acids 25-609 of human albumin(NP_000468.1).

Synonyms

ALB; HSA; PRO0883; PRO0903; PRO1341; albumin; Human albumin

Contact

☎ | 400-999-6126

✉ | cn.market@abclonal.com.cn

🌐 | www.abclonal.com.cn

Product Information

Source

Rabbit

Isotype

IgG

Purification

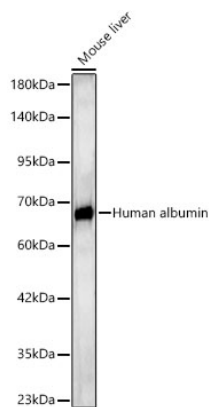
Affinity purification

Storage

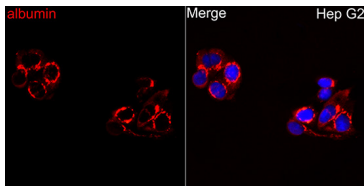
Store at -20°C. Avoid freeze / thaw cycles.

Buffer: PBS with 0.05% proclin300, 50% glycerol, pH7.3.

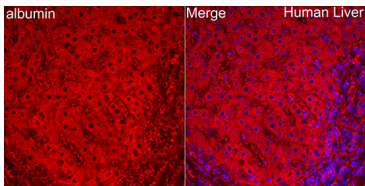
Validation Data



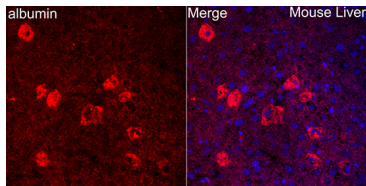
Western blot analysis of lysates from Mouse liver using Human albumin Rabbit pAb(A24843) at 1:1000 dilution.
Secondary antibody:HRP Goat Anti-Rabbit IgG (H+L)(AS014) at 1:10000 dilution.
Lysates/proteins: 25 µg per lane.
Blocking buffer: 3% nonfat dry milk in TBST.
Detection:ECL Basic Kit (RM00020).
Exposure time:20s.



Immunofluorescence analysis of Hep G2 cells using Human albumin Rabbit pAb (A24843) at dilution of 1:200 (40x lens). Secondary antibody: Cy3 Goat Anti-Rabbit IgG (H+L) (AS007) at 1:500 dilution. Blue: DAPI for nuclear staining.



Immunofluorescence analysis of paraffin-embedded human liver using Human albumin Rabbit pAb (A24843) at dilution of 1:200 (40x lens). Secondary antibody: Cy3 Goat Anti-Rabbit IgG (H+L) (AS007) at 1:500 dilution. Blue: DAPI for nuclear staining.



Immunofluorescence analysis of paraffin-embedded mouse liver using Human albumin Rabbit pAb (A24843) at dilution of 1:200 (40x lens). Secondary antibody: Cy3 Goat Anti-Rabbit IgG (H+L) (AS007) at 1:500 dilution. Blue: DAPI for nuclear staining.