

ITGB3 Rabbit pAb

Catalog No.: A24844

Basic Information

Observed MW

97kDa/130kDa

Calculated MW

86kDa/87kDa

Category

Primary antibody

Applications

ELISA, WB, FC

Cross-Reactivity

Human, Mouse, Rat

Background

The ITGB3 protein product is the integrin beta chain beta 3. Integrins are integral cell-surface proteins composed of an alpha chain and a beta chain. A given chain may combine with multiple partners resulting in different integrins. Integrin beta 3 is found along with the alpha IIb chain in platelets. Integrins are known to participate in cell adhesion as well as cell-surface mediated signalling.

Recommended Dilutions

WB 1:500 - 1:1000

Immunogen Information

Gene ID

3690

Swiss Prot

P05106

Immunogen

Recombinant fusion protein containing a sequence corresponding to amino acids 21-718 of human ITGB3(NP_000203.2).

Synonyms

ITGB3; BDPLT16; BDPLT2; CD61; GP3A; GPIIIa; GT; integrin beta-3

Contact

 | 400-999-6126

 | cn.market@abclonal.com.cn

 | www.abclonal.com.cn

Product Information

Source

Rabbit

Isotype

IgG

Purification

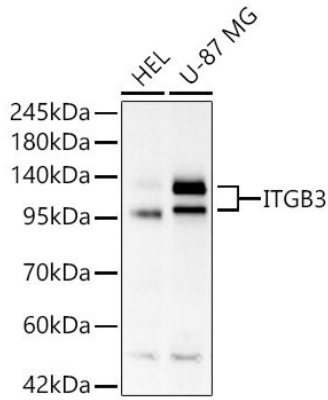
Affinity purification

Storage

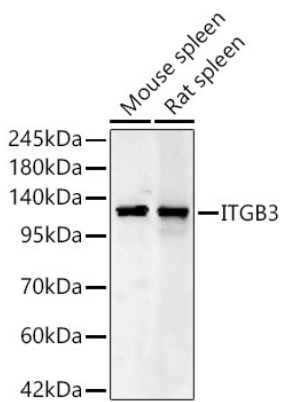
Store at -20°C. Avoid freeze / thaw cycles.

Buffer: PBS with 0.05% proclin300, 50% glycerol, pH7.3.

Validation Data



Western blot analysis of various lysates using ITGB3 Rabbit pAb (A24844) at 1:900 dilution.
Secondary antibody: HRP Goat Anti-Rabbit IgG (H+L) (AS014) at 1:10000 dilution.
Lysates / proteins: 25 µg per lane.
Blocking buffer: 3 % nonfat dry milk in TBST.
Detection: ECL Basic Kit (RM00020).
Exposure time: 30s.



Western blot analysis of various lysates using ITGB3 Rabbit pAb (A24844) at 1:900 dilution.
Secondary antibody: HRP Goat Anti-Rabbit IgG (H+L) (AS014) at 1:10000 dilution.
Lysates / proteins: 25 µg per lane.
Blocking buffer: 3 % nonfat dry milk in TBST.
Detection: ECL Basic Kit (RM00020).
Exposure time: 90s.