

SLC1A7 Rabbit pAb

Catalog No.: A24854

Basic Information

Observed MW

70kDa

Calculated MW

17kDa/60kDa

Category

Primary antibody

Applications

ELISA, WB

Cross-Reactivity

Mouse

Background

Predicted to enable anion transmembrane transporter activity. Involved in neurotransmitter reuptake. Predicted to be located in plasma membrane. Predicted to be active in glutamatergic synapse. Predicted to be integral component of postsynaptic membrane and integral component of presynaptic membrane.

Recommended Dilutions

WB 1:500 - 1:1000

Immunogen Information

Gene ID

6512

Swiss Prot

O00341

Immunogen

Recombinant fusion protein containing a sequence corresponding to amino acids 480-560 of human SLC1A7 (NP_006662.3).

Synonyms

SLC1A7; AAAT; EAAT5; solute carrier family 1 member 7

Contact

 | 400-999-6126

 | cn.market@abclonal.com.cn

 | www.abclonal.com.cn

Product Information

Source

Rabbit

Isotype

IgG

Purification

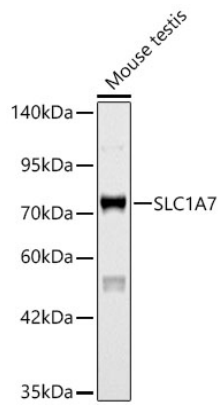
Affinity purification

Storage

Store at -20°C. Avoid freeze / thaw cycles.

Buffer: PBS with 0.05% proclin300, 50% glycerol, pH7.3.

Validation Data



Western blot analysis of lysates from Mouse testis using SLC1A7 Rabbit pAb(A24854) at 1:1000 dilution.
Secondary antibody: HRP Goat Anti-Rabbit IgG (H+L) (AS014) at 1:10000 dilution.
Lysates/proteins: 25 µg per lane.
Blocking buffer: 3% nonfat dry milk in TBST.
Detection: ECL Basic Kit (RM00020).
Exposure time: 180s.