

ZC3H12A Rabbit pAb

Catalog No.: A24857

Basic Information

Observed MW

66kDa

Calculated MW

65kDa

Category

Primary antibody

Applications

ELISA, WB

Cross-Reactivity

Human

Background

ZC3H12A is an MCP1 (CCL2; MIM 158105)-induced protein that acts as a transcriptional activator and causes cell death of cardiomyocytes, possibly via induction of genes associated with apoptosis.[supplied by OMIM, Mar 2008]

Recommended Dilutions

WB 1:500 - 1:1000

Immunogen Information

Gene ID

80149

Swiss Prot

Q5D1E8

Immunogen

Recombinant fusion protein containing a sequence corresponding to amino acids 339-599 of human ZC3H12A(NP_079355.2).

Synonyms

ZC3H12A; MCP1P; MCP1P-1; MCP1P1; Reg1; dJ423B22.1; endoribonuclease ZC3H12A

Contact

☎ | 400-999-6126

✉ | cn.market@abclonal.com.cn

🌐 | www.abclonal.com.cn

Product Information

Source

Rabbit

Isotype

IgG

Purification

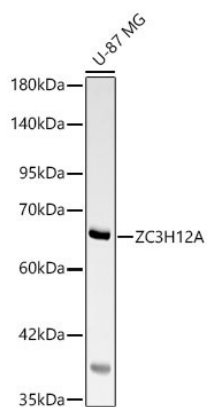
Affinity purification

Storage

Store at -20°C. Avoid freeze / thaw cycles.

Buffer: PBS with 0.05% proclin300, 50% glycerol, pH7.3.

Validation Data



Western blot analysis of lysates from U-87 MG cells using ZC3H12A Rabbit pAb(A24857) at 1:1000 dilution.

Secondary antibody: HRP Goat Anti-Rabbit IgG (H+L) (AS014) at 1:10000 dilution.

Lysates/proteins: 25 µg per lane.

Blocking buffer: 3% nonfat dry milk in TBST.

Detection: ECL Basic Kit (RM00020).

Exposure time: 30s.