

LHB/CGB1 Rabbit pAb

Catalog No.: A24859

Basic Information

Observed MW

15-30kDa

Calculated MW

15kDa

Category

Primary antibody

Applications

ELISA, WB, IHC-P

Cross-Reactivity

Human

Background

This gene is a member of the glycoprotein hormone beta chain family and encodes the beta subunit of luteinizing hormone (LH). Glycoprotein hormones are heterodimers consisting of a common alpha subunit and a unique beta subunit which confers biological specificity. LH is expressed in the pituitary gland and promotes spermatogenesis and ovulation by stimulating the testes and ovaries to synthesize steroids. The genes for the beta chains of chorionic gonadotropin and for luteinizing hormone are contiguous on chromosome 19q13.3. Mutations in this gene are associated with hypogonadism which is characterized by infertility and pseudohermaphroditism.

Recommended Dilutions

WB	1:500 - 1:1000
IHC-P	1:50 - 1:200

Immunogen Information

Gene ID

3972

Swiss Prot

P01229

Immunogen

Recombinant Protein corresponding to a sequence within amino acids 21-141 of human LHB(NP_000885.1).

Synonyms

LHB; CGB4; HH23; LSH-B; LSH-beta; Lutropin subunit beta; Lutropin subunit beta

Contact

 | 400-999-6126

 | cn.market@abclonal.com.cn

 | www.abclonal.com.cn

Product Information

Source

Rabbit

Isotype

IgG

Purification

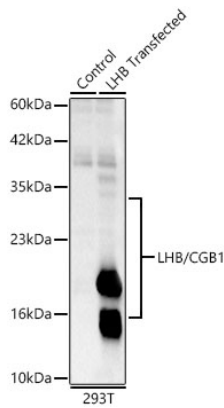
Affinity purification

Storage

Store at -20°C. Avoid freeze / thaw cycles.

Buffer: PBS with 0.05% proclin300, 50% glycerol, pH7.3.

Validation Data



Western blot analysis of lysates from wild type (WT) and 293T cells transfected with LHB/CGB1 using Lutropin subunit beta Rabbit pAb(A24859) at 1:800 dilution.

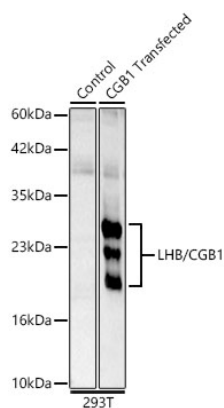
Secondary antibody: HRP Goat Anti-Rabbit IgG (H+L) (AS014) at 1:10000 dilution.

Lysates/proteins: 25 µg per lane.

Blocking buffer: 3% nonfat dry milk in TBST.

Detection: ECL Basic Kit (RM00020).

Exposure time: 45s.



Western blot analysis of lysates from wild type (WT) and 293T cells transfected with LHB/CGB1 using Lutropin subunit beta Rabbit pAb(A24859) at 1:800 dilution.

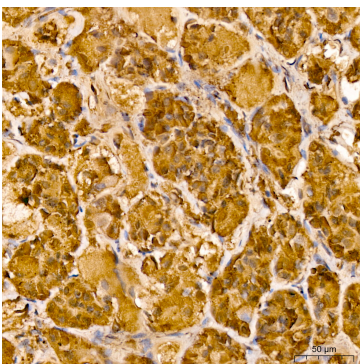
Secondary antibody: HRP Goat Anti-Rabbit IgG (H+L) (AS014) at 1:10000 dilution.

Lysates/proteins: 25 µg per lane.

Blocking buffer: 3% nonfat dry milk in TBST.

Detection: ECL Basic Kit (RM00020).

Exposure time: 45s.



Immunohistochemistry analysis of LHB/CGB1 in paraffin-embedded Human pituitary gland tissue using LHB/CGB1 Rabbit pAb (A24859) at a dilution of 1:100 (40x lens). High pressure antigen retrieval was performed with 0.01 M Tris-EDTA buffer (pH 9.0) prior to IHC staining.