

# Myelin Basic Protein/MBP Rabbit pAb

**Catalog No.: A24860**

## Basic Information

**Observed MW**

17-33kDa

**Calculated MW**

17kDa/18kDa/20kDa/21kDa/33kDa

**Category**

Primary antibody

**Applications**

WB,IHC-P,IF/ICC

**Cross-Reactivity**

Human, Mouse, Rat

## Background

The protein encoded by the classic MBP gene is a major constituent of the myelin sheath of oligodendrocytes and Schwann cells in the nervous system. However, MBP-related transcripts are also present in the bone marrow and the immune system. These mRNAs arise from the long MBP gene (otherwise called 'Golli-MBP') that contains 3 additional exons located upstream of the classic MBP exons. Alternative splicing from the Golli and the MBP transcription start sites gives rise to 2 sets of MBP-related transcripts and gene products. The Golli mRNAs contain 3 exons unique to Golli-MBP, spliced in-frame to 1 or more MBP exons. They encode hybrid proteins that have N-terminal Golli aa sequence linked to MBP aa sequence. The second family of transcripts contain only MBP exons and produce the well characterized myelin basic proteins. This complex gene structure is conserved among species suggesting that the MBP transcription unit is an integral part of the Golli transcription unit and that this arrangement is important for the function and/or regulation of these genes.

## Recommended Dilutions

<b>WB</b>	1:500 - 1:1000
<b>IHC-P</b>	1:50 - 1:200
<b>IF/ICC</b>	1:50 - 1:200

## Immunogen Information

**Gene ID**

4155

**Swiss Prot**

P02686

**Immunogen**

Recombinant fusion protein containing a sequence corresponding to amino acids 1-304 of human Myelin Basic Protein/MBP (NP\_001020272.1).

**Synonyms**

MBP; myelin basic protein; Myelin Basic Protein/MBP

## Contact

	400-999-6126
	<a href="mailto:cn.market@abclonal.com.cn">cn.market@abclonal.com.cn</a>
	<a href="http://www.abclonal.com.cn">www.abclonal.com.cn</a>

## Product Information

**Source**

Rabbit

**Isotype**

IgG

**Purification**

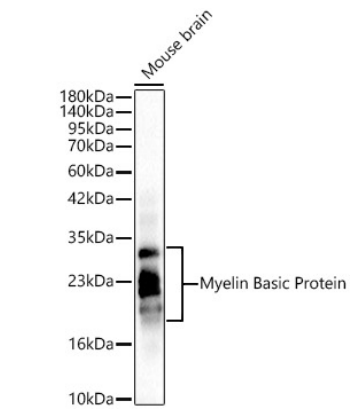
Affinity purification

**Storage**

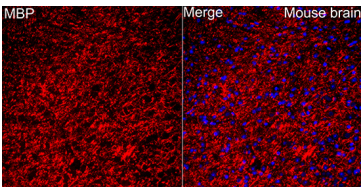
Store at -20°C. Avoid freeze / thaw cycles.

Buffer: PBS with 0.05% proclin300,50% glycerol,pH7.3.

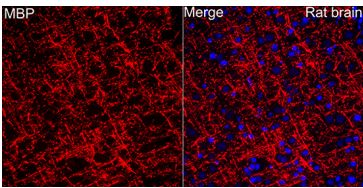
Validation Data



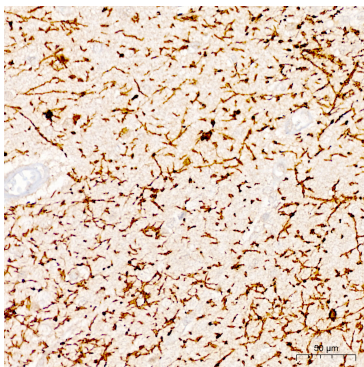
Western blot analysis of lysates from Mouse brain using Myelin Basic Protein/MBP Rabbit pAb(A24860) at 1:800 dilution.  
Secondary antibody: HRP Goat Anti-Rabbit IgG (H+L) (AS014) at 1:10000 dilution.  
Lysates/proteins: 25 µg per lane.  
Blocking buffer: 3% nonfat dry milk in TBST.  
Detection: ECL Basic Kit (RM00020).  
Exposure time:0.5s.



Immunofluorescence analysis of paraffin-embedded mouse brain using Myelin Basic Protein/MBP Rabbit pAb (A24860) at dilution of 1:50 (40x lens). Secondary antibody: Cy3 Goat Anti-Rabbit IgG (H+L) (AS007) at 1:500 dilution. Blue: DAPI for nuclear staining. Perform microwave antigen retrieval with 0.01M citrate buffer (pH 6.0) prior to IF staining.



Immunofluorescence analysis of paraffin-embedded rat brain using Myelin Basic Protein/MBP Rabbit pAb (A24860) at dilution of 1:50 (40x lens). Secondary antibody: Cy3 Goat Anti-Rabbit IgG (H+L) (AS007) at 1:500 dilution. Blue: DAPI for nuclear staining. Perform microwave antigen retrieval with 0.01M citrate buffer (pH 6.0) prior to IF staining.



Immunohistochemistry analysis of Myelin Basic Protein/MBP in paraffin-embedded Human brain tissue using Myelin Basic Protein/MBP Rabbit pAb (A24860) at a dilution of 1:100 (40x lens). High pressure antigen retrieval was performed with 0.01 M Tris-EDTA buffer (pH 9.0) prior to IHC staining.