

Human Pro-Collagen I alpha Rabbit pAb

Catalog No.: A24863

Basic Information

Observed MW

220kDa

Calculated MW

138kDa

Category

Primary antibody

Applications

WB,IHC-P,IF/ICC

Cross-Reactivity

Human

Background

This gene encodes the pro-alpha1 chains of type I collagen whose triple helix comprises two alpha1 chains and one alpha2 chain. Type I is a fibril-forming collagen found in most connective tissues and is abundant in bone, cornea, dermis and tendon. Mutations in this gene are associated with osteogenesis imperfecta types I-IV, Ehlers-Danlos syndrome type VIIA, Ehlers-Danlos syndrome Classical type, Caffey Disease and idiopathic osteoporosis. Reciprocal translocations between chromosomes 17 and 22, where this gene and the gene for platelet-derived growth factor beta are located, are associated with a particular type of skin tumor called dermatofibrosarcoma protuberans, resulting from unregulated expression of the growth factor. Two transcripts, resulting from the use of alternate polyadenylation signals, have been identified for this gene.

Recommended Dilutions

WB	1:1000 - 1:5000
IHC-P	1:50 - 1:200
IF/ICC	1:50 - 1:200

Immunogen Information

Gene ID

1277

Swiss Prot

P02452

Immunogen

Recombinant fusion protein containing a sequence corresponding to amino acids 26-161 of human Collagen I/COL1A1 (NP_000079.2).

Synonyms

COL1A1; EDSC; OI1; OI2; OI3; OI4; collagen alpha-1(I) chain; Human Pro-Collagen I alpha

Contact

 | 400-999-6126 | cn.market@abclonal.com.cn | www.abclonal.com.cn

Product Information

Source

Rabbit

Isotype

IgG

Purification

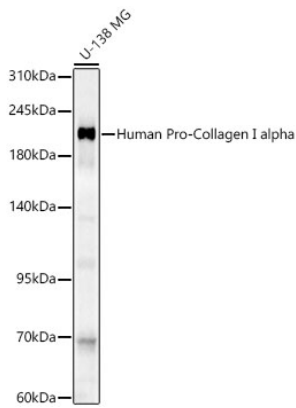
Affinity purification

Storage

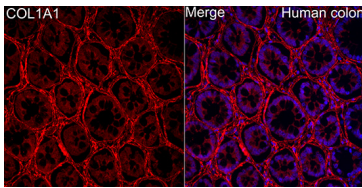
Store at -20°C. Avoid freeze / thaw cycles.

Buffer: PBS with 0.05% proclin300,50% glycerol,pH7.3.

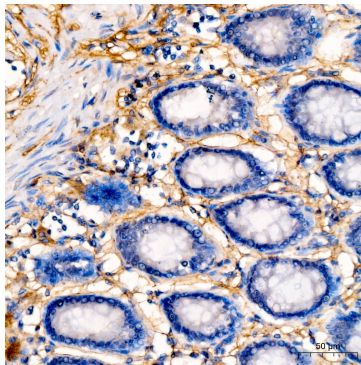
Validation Data



Western blot analysis of lysates from U-138 MG cells using Human Pro-Collagen I alpha Rabbit pAb(A24863) at 1:2000 dilution.
Secondary antibody:HRP Goat Anti-Rabbit IgG (H+L)(AS014) at 1:10000 dilution.
Lysates/proteins: 25 µg per lane.
Blocking buffer: 3% nonfat dry milk in TBST.
Detection:ECL Enhanced Kit (RM00021).
Exposure time:30s.



Immunofluorescence analysis of paraffin-embedded human colon using Human Pro-Collagen I alpha Rabbit pAb (A24863) at dilution of 1:200 (40x lens). Secondary antibody: Cy3 Goat Anti-Rabbit IgG (H+L) (AS007) at 1:500 dilution. Blue: DAPI for nuclear staining. Perform high pressure antigen retrieval with 0.01M citrate buffer (pH 6.0) prior to IF staining.



Immunohistochemistry analysis of Human Pro-Collagen I alpha in paraffin-embedded human colon tissue using Human Pro-Collagen I alpha Rabbit pAb (A24863) at a dilution of 1:200 (40x lens). High pressure antigen retrieval was performed with 0.01 M citrate buffer (pH 6.0) prior to IHC staining.