

IFI16 Rabbit pAb

Catalog No.: A24865

Basic Information

Observed MW

95kDa,98kDa

Calculated MW

75kDa/82kDa/88kDa

Category

Primary antibody

Applications

ELISA,WB,FC

Cross-Reactivity

Human

Background

This gene encodes a member of the HIN-200 (hematopoietic interferon-inducible nuclear antigens with 200 amino acid repeats) family of cytokines. The encoded protein contains domains involved in DNA binding, transcriptional regulation, and protein-protein interactions. The protein localizes to the nucleoplasm and nucleoli, and interacts with p53 and retinoblastoma-1. It modulates p53 function, and inhibits cell growth in the Ras/Raf signaling pathway. Alternatively spliced transcript variants encoding different isoforms have been found for this gene.

Recommended Dilutions

WB 1:500 - 1:1000

FC 1:500 - 1:1000

Immunogen Information

Gene ID

3428

Swiss Prot

Q16666

Immunogen

Recombinant fusion protein containing a sequence corresponding to amino acids 500-785 of human IFI16 (NP_001351796.1).

Synonyms

IFI16; IFNGIP1; PYHIN2; gamma-interferon-inducible protein 16

Contact

☎ | 400-999-6126

✉ | cn.market@abclonal.com.cn

🌐 | www.abclonal.com.cn

Product Information

Source

Rabbit

Isotype

IgG

Purification

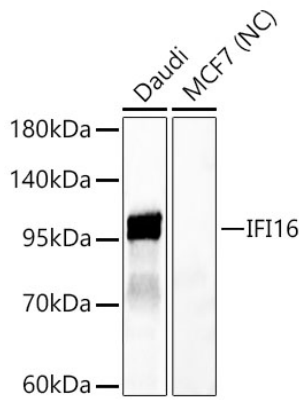
Affinity purification

Storage

Store at -20°C. Avoid freeze / thaw cycles.

Buffer: PBS with 0.05% proclin300,50% glycerol,pH7.3.

Validation Data



Western blot analysis of various lysates using IFI16 Rabbit pAb (A24865) at 1:1000 dilution.
Secondary antibody: HRP Goat Anti-Rabbit IgG (H+L) (AS014) at 1:10000 dilution.
Lysates/proteins: 25 µg per lane.
Blocking buffer: 3% nonfat dry milk in TBST.
Detection: ECL Basic Kit (RM00020).
Negative control (NC): MCF7.
Exposure time: 0.5s.