

Ku80 Rabbit pAb

Catalog No.: A24867

Basic Information

Observed MW

83kDa

Calculated MW

83kDa

Category

Primary antibody

Applications

ELISA, WB

Cross-Reactivity

Human, Mouse

Background

Predicted to enable several functions, including nucleic acid binding activity; protein C-terminus binding activity; and ubiquitin protein ligase binding activity. Predicted to contribute to 5'-deoxyribose-5-phosphate lyase activity and double-stranded telomeric DNA binding activity. Acts upstream of or within several processes, including cellular response to leukemia inhibitory factor; hematopoietic stem cell differentiation; and positive regulation of neurogenesis. Located in cytoplasm and nucleus. Is expressed in thymus primordium. Human ortholog(s) of this gene implicated in chronic obstructive pulmonary disease and multiple myeloma. Orthologous to human XRCC5 (X-ray repair cross complementing 5).

Recommended Dilutions

WB 1:500 - 1:1000

Immunogen Information

Gene ID

22596

Swiss Prot

P27641

Immunogen

Recombinant fusion protein containing a sequence corresponding to amino acids 543-732 of mouse Ku80 (NP_033559.2).

Synonyms

Ku80; Ku86; CTC85; CTCBF

Contact

☎ | 400-999-6126

✉ | cn.market@abclonal.com.cn

🌐 | www.abclonal.com.cn

Product Information

Source

Rabbit

Isotype

IgG

Purification

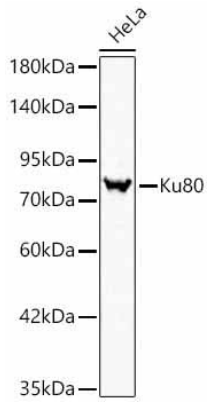
Affinity purification

Storage

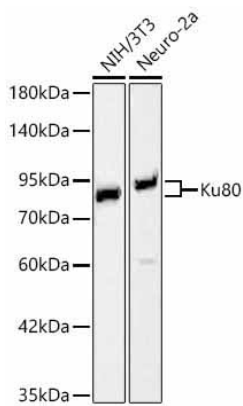
Store at -20°C. Avoid freeze / thaw cycles.

Buffer: PBS with 0.05% proclin300, 50% glycerol, pH7.3.

Validation Data



Western blot analysis of lysates from HeLa cells using Ku80 Rabbit pAb(A24867) at 1:900 dilution.
Secondary antibody: HRP Goat Anti-Rabbit IgG (H+L) (AS014) at 1:10000 dilution.
Lysates/proteins: 25 µg per lane.
Blocking buffer: 3% nonfat dry milk in TBST.
Detection: ECL Basic Kit (RM00020).
Exposure time: 1s.



Western blot analysis of various lysates using Ku80 Rabbit pAb (A24867) at 1:900 dilution.
Secondary antibody: HRP Goat Anti-Rabbit IgG (H+L) (AS014) at 1:10000 dilution.
Lysates / proteins: 25 µg per lane.
Blocking buffer: 3 % nonfat dry milk in TBST.
Detection: ECL Basic Kit (RM00020).
Exposure time: 90s.