

# SFTPA1 Rabbit pAb

Catalog No.: A24870

## Basic Information

### Observed MW

30-38kDa

### Calculated MW

26kDa

### Category

Primary antibody

### Applications

WB

### Cross-Reactivity

Rat

## Background

This gene encodes a lung surfactant protein that is a member of a subfamily of C-type lectins called collectins. The encoded protein binds specific carbohydrate moieties found on lipids and on the surface of microorganisms. This protein plays an essential role in surfactant homeostasis and in the defense against respiratory pathogens. Mutations in this gene are associated with idiopathic pulmonary fibrosis. Alternate splicing results in multiple transcript variants.

## Recommended Dilutions

WB 1:1000 - 1:5000

## Immunogen Information

### Gene ID

653509/729238

### Swiss Prot

Q8IWL2/Q8IWL1

### Immunogen

Recombinant fusion protein containing a sequence corresponding to amino acids 100-248 of human SFTPA1 (NP\_001158116.1).

### Synonyms

SPA; ILD1; PSAP; PSPA; SP-A; SPA1; PSP-A; SFTP1; SP-A1; COLEC4; SFTPA1B; SP-A1 beta; SP-A1 delta; SP-A1 gamma; SP-A1 epsilon; SFTPA1

## Contact

☎ | 400-999-6126

✉ | [cn.market@abclonal.com.cn](mailto:cn.market@abclonal.com.cn)

🌐 | [www.abclonal.com.cn](http://www.abclonal.com.cn)

## Product Information

### Source

Rabbit

### Isotype

IgG

### Purification

Affinity purification

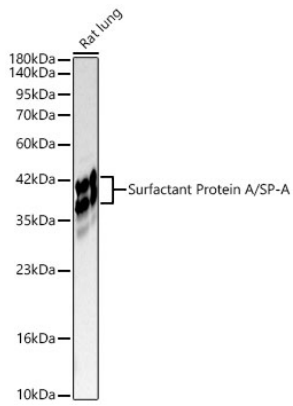
### Storage

Store at -20°C. Avoid freeze / thaw cycles.

Buffer: PBS with 0.05% proclin300,50% glycerol,pH7.3.

## Validation Data

---



Western blot analysis of lysates from Rat lung using Surfactant Protein A/SP-A Rabbit pAb(A24870) at 1:2000 dilution.

Secondary antibody:HRP Goat Anti-Rabbit IgG (H+L)(AS014) at 1:10000 dilution.

Lysates/proteins: 25 µg per lane.

Blocking buffer: 3% nonfat dry milk in TBST.

Detection:ECL Basic Kit (RM00020).

Exposure time:20s.