

CCL8/MCP-2 Rabbit pAb

Catalog No.: A24871

Basic Information

Observed MW

11kDa

Calculated MW

11kDa

Category

Primary antibody

Applications

WB

Cross-Reactivity

Human

Background

This antimicrobial gene is one of several chemokine genes clustered on the q-arm of chromosome 17. Chemokines form a superfamily of secreted proteins involved in immunoregulatory and inflammatory processes. The superfamily is divided into four subfamilies based on the arrangement of N-terminal cysteine residues of the mature peptide. This chemokine is a member of the CC subfamily which is characterized by two adjacent cysteine residues. This cytokine displays chemotactic activity for monocytes, lymphocytes, basophils and eosinophils. By recruiting leukocytes to sites of inflammation this cytokine may contribute to tumor-associated leukocyte infiltration and to the antiviral state against HIV infection.

Recommended Dilutions

WB 1:500 - 1:1000

Immunogen Information

Gene ID

6355

Swiss Prot

P80075

Immunogen

Recombinant fusion protein containing a sequence corresponding to amino acids 24-99 of human CCL8/MCP-2 (NP_005614.2).

Synonyms

CCL8; HC14; MCP-2; MCP2; SCYA10; SCYA8; C-C motif chemokine 8; CCL8/MCP-2

Contact

☎ | 400-999-6126

✉ | cn.market@abclonal.com.cn

🌐 | www.abclonal.com.cn

Product Information

Source

Rabbit

Isotype

IgG

Purification

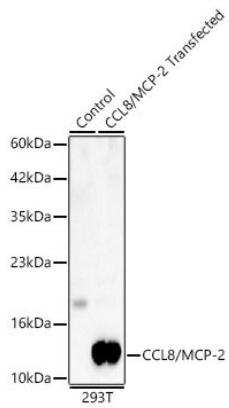
Affinity purification

Storage

Store at -20°C. Avoid freeze / thaw cycles.

Buffer: PBS with 0.05% proclin300,50% glycerol,pH7.3.

Validation Data



Western blot analysis of lysates from wild type (WT) and 293T cells transfected with CCL8/MCP-2 using CCL8/MCP-2 Rabbit pAb(A24871) at 1:1000 dilution.

Secondary antibody: HRP Goat Anti-Rabbit IgG (H+L) (AS014) at 1:10000 dilution.

Lysates/proteins: 25 µg per lane.

Blocking buffer: 3% nonfat dry milk in TBST.

Detection: ECL Basic Kit (RM00020).

Exposure time: 180s.