

NFAT2 Rabbit pAb

Catalog No.: A24872 **1 Publications**

Basic Information

Observed MW

70kDa

Calculated MW

38kDa/74- 88kDa/100-101kDa

Category

Primary antibody

Applications

WB,IF/ICC,(ELISA)

Cross-Reactivity

Human, Mouse, Rat

Background

The product of this gene is a component of the nuclear factor of activated T cells DNA-binding transcription complex. This complex consists of at least two components: a preexisting cytosolic component that translocates to the nucleus upon T cell receptor (TCR) stimulation, and an inducible nuclear component. Proteins belonging to this family of transcription factors play a central role in inducible gene transcription during immune response. The product of this gene is an inducible nuclear component. It functions as a major molecular target for the immunosuppressive drugs such as cyclosporin A. Multiple alternatively spliced transcript variants encoding distinct isoforms have been identified for this gene. Different isoforms of this protein may regulate inducible expression of different cytokine genes.

Recommended Dilutions

WB 1:500 - 1:1000

IF/ICC 1:50 - 1:200

ELISA Recommended starting concentration is 1 µg/mL. Please optimize the concentration based on your specific assay requirements.

Immunogen Information

Gene ID

4772

Swiss Prot

O95644

Immunogen

Recombinant Protein corresponding to a sequence within amino acids 595-694 of human NFAT2(NP_001265598.1).

Synonyms

NFATC1; NF-ATC; NF-ATc1.2; NFAT2; NFATc; nuclear factor of activated T-cells 1

Contact

☎ | 400-999-6126

✉ | cn.market@abclonal.com.cn

🌐 | www.abclonal.com.cn

Product Information

Source

Rabbit

Isotype

IgG

Purification

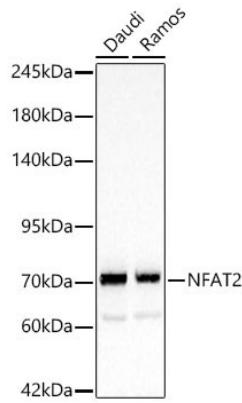
Affinity purification

Storage

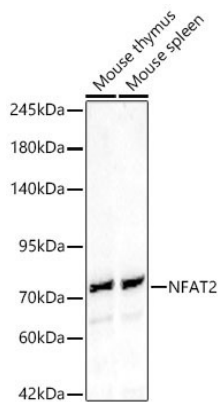
Store at -20°C. Avoid freeze / thaw cycles.

Buffer: PBS with 0.05% proclin300,50% glycerol,pH7.3.

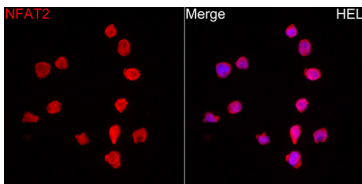
Validation Data



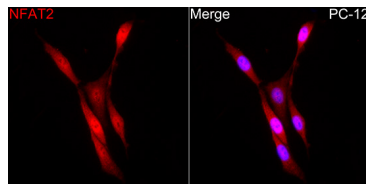
Western blot analysis of various lysates using NFAT2 Rabbit pAb (A24872) at 1:400 dilution.
 Secondary antibody: HRP-conjugated Goat anti-Rabbit IgG (H+L) (AS014) at 1:10000 dilution.
 Lysates / proteins: 25 µg per lane.
 Blocking buffer: 3 % nonfat dry milk in TBST.
 Detection: ECL Basic Kit (RM00020).
 Exposure time: 10s.



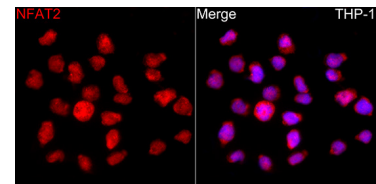
Western blot analysis of various lysates using NFAT2 Rabbit pAb (A24872) at 1:400 dilution.
 Secondary antibody: HRP-conjugated Goat anti-Rabbit IgG (H+L) (AS014) at 1:10000 dilution.
 Lysates / proteins: 25 µg per lane.
 Blocking buffer: 3 % nonfat dry milk in TBST.
 Detection: ECL Basic Kit (RM00020).
 Exposure time: 180s.



Immunofluorescence analysis of HEL cells using NFAT2 Rabbit pAb(A24872) at a dilution of 1:25 (40x lens). Secondary antibody: Cy3 Goat Anti-Rabbit IgG (H+L)(AS007) at 1:500 dilution. Blue: DAPI for nuclear staining.

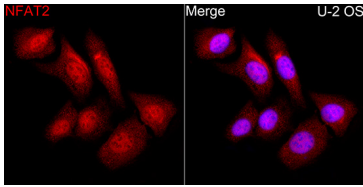


Immunofluorescence analysis of PC-12 cells using NFAT2 Rabbit pAb(A24872) at a dilution of 1:25 (40x lens). Secondary antibody: Cy3 Goat Anti-Rabbit IgG (H+L)(AS007) at 1:500 dilution. Blue: DAPI for nuclear staining.



Immunofluorescence analysis of THP-1 cells using NFAT2 Rabbit pAb(A24872) at a dilution of 1:25 (40x lens). Secondary antibody: Cy3 Goat Anti-Rabbit IgG (H+L)(AS007) at 1:500 dilution. Blue: DAPI for nuclear staining.

Validation Data



Immunofluorescence analysis of U-2 OS cells using NFAT2 Rabbit pAb(A24872) at a dilution of 1:25 (40x lens). Secondary antibody: Cy3 Goat Anti-Rabbit IgG (H+L)(AS007) at 1:500 dilution. Blue: DAPI for nuclear staining.