

# CD324/E-Cadherin Rabbit pAb

Catalog No.: A24874

5 Publications

## Basic Information

**Observed MW**

135kDa

**Calculated MW**

98kDa

**Category**

Primary antibody

**Applications**

WB, ELISA

**Cross-Reactivity**

Human, Mouse

## Background

This gene encodes E-cadherin, a calcium-dependent cell adhesion molecule that functions in the establishment and maintenance of epithelial cell morphology during embryogenesis and adulthood. The encoded preproprotein undergoes proteolytic processing to generate a mature protein. Targeted mutations disrupting binding of calcium to the encoded protein in mice cause death in utero due to failed blastocyst and trophectoderm formation. This gene is located adjacent to a related cadherin gene on chromosome 8.

## Recommended Dilutions

**WB** 1:1000 - 1:5000**ELISA** Recommended starting concentration is 1 µg/mL. Please optimize the concentration based on your specific assay requirements.

## Immunogen Information

**Gene ID**

12550

**Swiss Prot**

P09803

**Immunogen**

Recombinant protein (or fragment). This information is considered to be commercially sensitive.

**Synonyms**

CDH1; Arc-1; CD324; CDHE; ECAD; LCAM; UVO; AA960649; ARC-1; E-cad; Ecad; L-CAM; Um; cadherin-1; CD324/E-Cadherin

## Contact

 | 400-999-6126 | [cn.market@abclonal.com.cn](mailto:cn.market@abclonal.com.cn) | [www.abclonal.com.cn](http://www.abclonal.com.cn)

## Product Information

**Source**

Rabbit

**Isotype**

IgG

**Purification**

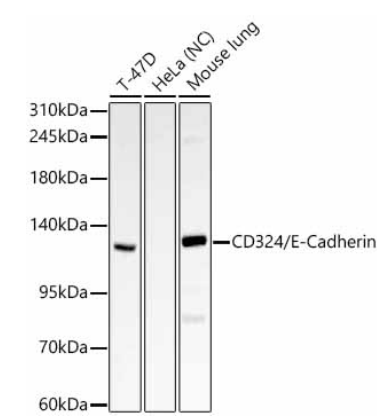
Affinity purification

**Storage**

Store at -20°C. Avoid freeze / thaw cycles.

Buffer: PBS containing 50% glycerol, preserved with proclin300 or sodium azide (as specified on the Certificate of Analysis), pH 7.3.

# Validation Data



Western blot analysis of various lysates using CD324/E-Cadherin Rabbit pAb (A24874) at 1:2000 dilution. Secondary antibody: HRP-conjugated Goat anti-Rabbit IgG (H+L) (AS014) at 1:10000 dilution. Lysates/proteins: 25 µg per lane. Blocking buffer: 3% nonfat dry milk in TBST. Detection: ECL Basic Kit (RM00020). Negative control (NC): HeLa. Exposure time: 5s.