

CD324/E-Cadherin Rabbit PolymAb®

Catalog No.: A24874PM

Basic Information

Observed MW

135kDa

Calculated MW

98kDa

Category

Primary antibody

Applications

WB,IF-F,IF-P,IHC-P,ELISA

Cross-Reactivity

Mouse, Rat

Background

This gene encodes E-cadherin, a calcium-dependent cell adhesion molecule that functions in the establishment and maintenance of epithelial cell morphology during embryogenesis and adulthood. The encoded preproprotein undergoes proteolytic processing to generate a mature protein. Targeted mutations disrupting binding of calcium to the encoded protein in mice cause death in utero due to failed blastocyst and trophectoderm formation. This gene is located adjacent to a related cadherin gene on chromosome 8.

Recommended Dilutions

WB 1:1000 - 1:4000

IF-F 1:200 - 1:400

IF-P 1:200 - 1:800

IHC-P 1:700 - 1:7000

ELISA Recommended starting concentration is 1 µg/mL. Please optimize the concentration based on your specific assay requirements.

Immunogen Information

Gene ID

12550

Swiss Prot

P09803

Immunogen

Recombinant protein (or fragment). This information is considered to be commercially sensitive.

Synonyms

Um; UVO; Ecad; ARC-1; E-cad; L-CAM

Contact

☎ | 400-999-6126

✉ | cn.market@abclonal.com.cn

🌐 | www.abclonal.com.cn

Product Information

Source

Rabbit

Isotype

IgG

Purification

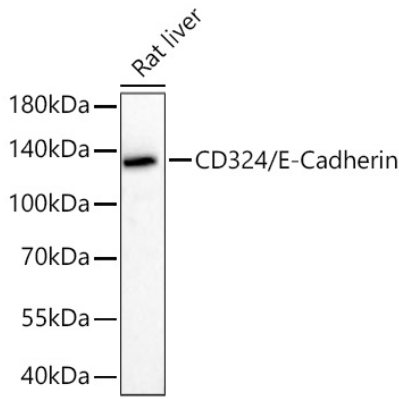
Affinity purification

Storage

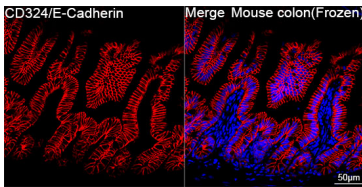
Store at -20°C. Avoid freeze / thaw cycles.

Buffer: PBS with 0.09% Sodium azide, 0.05% BSA, 50% glycerol, pH7.3.

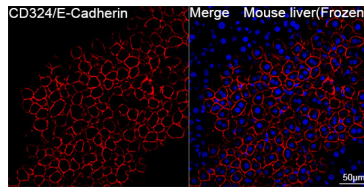
Validation Data



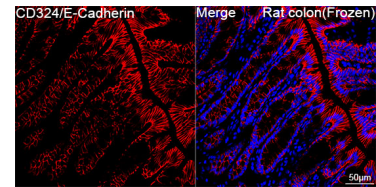
Western blot analysis of lysates from Rat liver using CD324/E-Cadherin Rabbit PolymAb® (A24874PM) at 1:1000 dilution incubated overnight at 4°C.
 Secondary antibody: HRP-conjugated Goat anti-Rabbit IgG (H+L) (AS014) at 1:10000 dilution.
 Lysates/proteins: 25 µg per lane.
 Blocking buffer: 3% nonfat dry milk in TBST.
 Detection: ECL Basic Kit (RM00020).
 Exposure time: 20s.



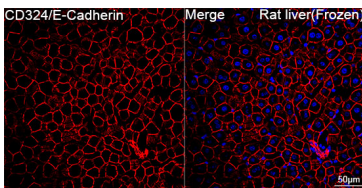
Confocal imaging of frozen sections of Mouse colon tissue using CD324/E-Cadherin Rabbit PolymAb® (A24874PM, dilution 1:200) followed by a further incubation with Cy3-conjugated Goat anti-Rabbit IgG (H+L) (AS007, dilution 1:500) (Red). DAPI was used for nuclear staining (Blue). Microwave antigen retrieval performed with 0.01M Citrate Buffer (pH 6.0) prior to IF staining. Objective: 40x.



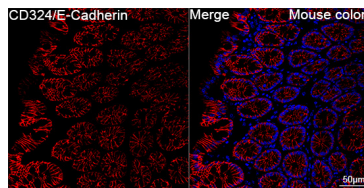
Confocal imaging of frozen sections of Mouse liver tissue using CD324/E-Cadherin Rabbit PolymAb® (A24874PM, dilution 1:200) followed by a further incubation with Cy3-conjugated Goat anti-Rabbit IgG (H+L) (AS007, dilution 1:500) (Red). DAPI was used for nuclear staining (Blue). Microwave antigen retrieval performed with 0.01M Citrate Buffer (pH 6.0) prior to IF staining. Objective: 40x.



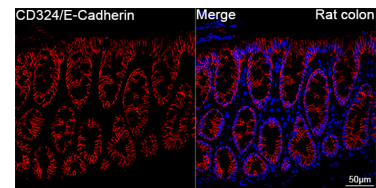
Confocal imaging of frozen sections of Rat colon tissue using CD324/E-Cadherin Rabbit PolymAb® (A24874PM, dilution 1:200) followed by a further incubation with Cy3-conjugated Goat anti-Rabbit IgG (H+L) (AS007, dilution 1:500) (Red). DAPI was used for nuclear staining (Blue). Microwave antigen retrieval performed with 0.01M Citrate Buffer (pH 6.0) prior to IF staining. Objective: 40x.



Confocal imaging of frozen sections of Rat liver tissue using CD324/E-Cadherin Rabbit PolymAb® (A24874PM, dilution 1:200) followed by a further incubation with Cy3-conjugated Goat anti-Rabbit IgG (H+L) (AS007, dilution 1:500) (Red). DAPI was used for nuclear staining (Blue). Microwave antigen retrieval performed with 0.01M Citrate Buffer (pH 6.0) prior to IF staining. Objective: 40x.

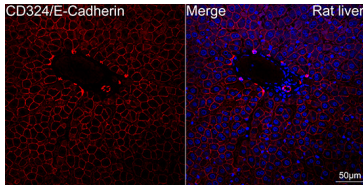


Confocal imaging of paraffin-embedded Mouse colon tissue using CD324/E-Cadherin Rabbit PolymAb® (A24874PM, dilution 1:200) followed by a further incubation with Cy3 Goat Anti-Rabbit IgG (H+L) (AS007, dilution 1:500) (Red). DAPI was used for nuclear staining (Blue). High pressure antigen retrieval performed with 0.01M Citrate Buffer (pH 6.0) prior to IF staining. Objective: 40x.

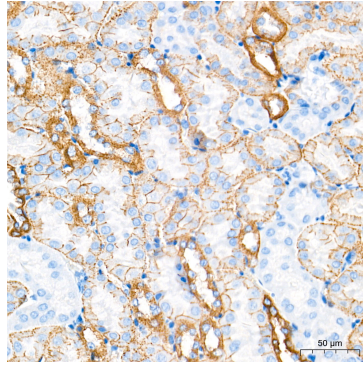


Confocal imaging of paraffin-embedded Rat colon tissue using CD324/E-Cadherin Rabbit PolymAb® (A24874PM, dilution 1:200) followed by a further incubation with Cy3 Goat Anti-Rabbit IgG (H+L) (AS007, dilution 1:500) (Red). DAPI was used for nuclear staining (Blue). High pressure antigen retrieval performed with 0.01M Citrate Buffer (pH 6.0) prior to IF staining. Objective: 40x.

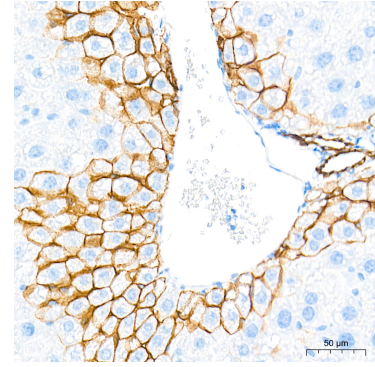
Validation Data



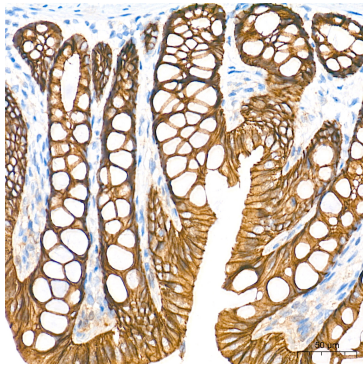
Confocal imaging of paraffin-embedded Rat liver tissue using CD324/E-Cadherin Rabbit PolymAb® (A24874PM, dilution 1:200) followed by a further incubation with Cy3 Goat Anti-Rabbit IgG (H+L) (AS007, dilution 1:500) (Red). DAPI was used for nuclear staining (Blue). High pressure antigen retrieval performed with 0.01M Citrate Buffer (pH 6.0) prior to IF staining. Objective: 40x.



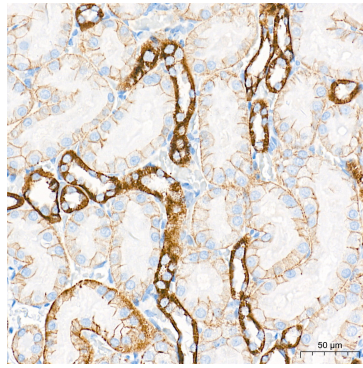
Immunohistochemistry analysis of paraffin-embedded Mouse kidney tissue using CD324/E-Cadherin Rabbit PolymAb® (A24874PM) at a dilution of 1:7000 (40x lens). High pressure antigen retrieval performed with 0.01M Tris-EDTA Buffer (pH 9.0) prior to IHC staining.



Immunohistochemistry analysis of paraffin-embedded Mouse liver tissue using CD324/E-Cadherin Rabbit PolymAb® (A24874PM) at a dilution of 1:7000 (40x lens). High pressure antigen retrieval performed with 0.01M Tris-EDTA Buffer (pH 9.0) prior to IHC staining.



Immunohistochemistry analysis of paraffin-embedded Rat colon tissue using CD324/E-Cadherin Rabbit PolymAb® (A24874PM) at a dilution of 1:7000 (40x lens). High pressure antigen retrieval performed with 0.01M Tris-EDTA Buffer (pH 9.0) prior to IHC staining.



Immunohistochemistry analysis of paraffin-embedded Rat kidney tissue using CD324/E-Cadherin Rabbit PolymAb® (A24874PM) at a dilution of 1:7000 (40x lens). High pressure antigen retrieval performed with 0.01M Tris-EDTA Buffer (pH 9.0) prior to IHC staining.