

# mouse CD24 Rabbit pAb

Catalog No.: A24878

## Basic Information

### Observed MW

Refer to figures

### Calculated MW

8kDa

### Category

Primary antibody

### Applications

WB,FC,ELISA

### Cross-Reactivity

Mouse

## Background

CD24 (also known as heat-resistant antigen HSA) is a P-selectin ligand associated with adhesion. It is a GPI anchored glycoprotein expressed in many types of cells, including hematopoietic cells, neural cells, and epithelial cells. CD24 is widely used to determine the stage of lymphocyte development. It also binds to Siglec-10 in human cells or Siglec-G in mouse cells. CD24 is often used as a cancer stem cell marker for detecting and isolating various types of cancer cells.

## Recommended Dilutions

**WB** 1:500 - 1:1000

**ELISA** Recommended starting concentration is 1 µg/mL. Please optimize the concentration based on your specific assay requirements.

## Immunogen Information

### Gene ID

12484

### Swiss Prot

P24807

### Immunogen

Recombinant protein (or fragment). This information is considered to be commercially sensitive.

### Synonyms

## Contact

☎ | 400-999-6126

✉ | [cn.market@abclonal.com.cn](mailto:cn.market@abclonal.com.cn)

🌐 | [www.abclonal.com.cn](http://www.abclonal.com.cn)

## Product Information

### Source

Rabbit

### Isotype

IgG

### Purification

Affinity purification

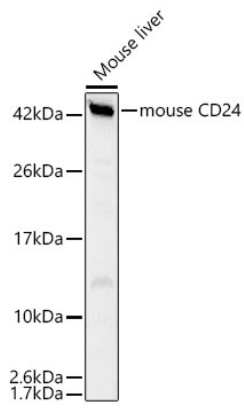
### Storage

Store at -20°C. Avoid freeze / thaw cycles.

Buffer: PBS containing 50% glycerol, preserved with proclin300 or sodium azide (as specified on the Certificate of Analysis), pH 7.3.

## Validation Data

---



Western blot analysis of lysates from Mouse liver using mouse CD24 Rabbit pAb (A24878) at 1:1000 dilution.

Secondary antibody: HRP-conjugated Goat anti-Rabbit IgG (H+L) (AS014) at 1:10000 dilution.

Lysates/proteins: 25 µg per lane.

Blocking buffer: 3% nonfat dry milk in TBST.

Detection: ECL Basic Kit (RM00020).

Exposure time: 60s.