

# Human CD3E Rabbit pAb

Catalog No.: A24879

## Basic Information

### Observed MW

23kDa/

### Calculated MW

23kDa

### Category

Primary antibody

### Applications

WB,IF/ICC

### Cross-Reactivity

Human

## Background

The protein encoded by this gene is the CD3-epsilon polypeptide, which together with CD3-gamma, -delta and -zeta, and the T-cell receptor alpha/beta and gamma/delta heterodimers, forms the T-cell receptor-CD3 complex. This complex plays an important role in coupling antigen recognition to several intracellular signal-transduction pathways. The genes encoding the epsilon, gamma and delta polypeptides are located in the same cluster on chromosome 11. The epsilon polypeptide plays an essential role in T-cell development. Defects in this gene cause immunodeficiency. This gene has also been linked to a susceptibility to type I diabetes in women.

## Recommended Dilutions

**WB** 1:500 - 1:1000

**IF/ICC** 1:50 - 1:200

## Immunogen Information

### Gene ID

916

### Swiss Prot

P07766

### Immunogen

Recombinant fusion protein containing a sequence corresponding to amino acids 22-126 of human CD3E(NP\_000724.1).

### Synonyms

CD3E; IMD18; T3E; TCRE; CD3e molecule; Human CD3E

## Contact

☎ | 400-999-6126

✉ | [cn.market@abclonal.com.cn](mailto:cn.market@abclonal.com.cn)

🌐 | [www.abclonal.com.cn](http://www.abclonal.com.cn)

## Product Information

### Source

Rabbit

### Isotype

IgG

### Purification

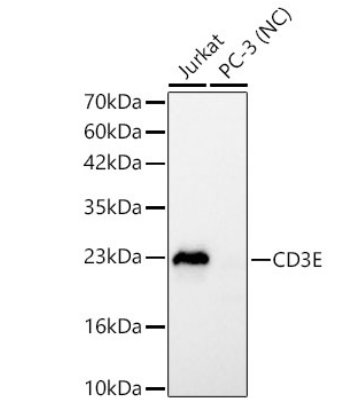
Affinity purification

### Storage

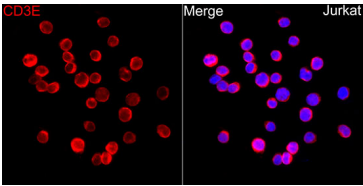
Store at -20°C. Avoid freeze / thaw cycles.

Buffer: PBS with 0.05% proclin300,50% glycerol,pH7.3.

Validation Data



Western blot analysis of various lysates using Human CD3E Rabbit pAb (A24879) at 1:900 dilution.  
Secondary antibody:HRP Goat Anti-Rabbit IgG (H+L)(AS014) at 1:10000 dilution.  
Lysates/proteins: 25 µg per lane.  
Blocking buffer: 3% nonfat dry milk in TBST.  
Detection:ECL Basic Kit (RM00020).  
Negative control (NC): PC-3.  
Exposure time: 1s.



Immunofluorescence analysis of Jurkat cells using Human CD3E Rabbit pAb (A24879) at dilution of 1:100 (40x lens). Secondary antibody: Cy3 Goat Anti-Rabbit IgG (H+L) (AS007) at 1:500 dilution. Blue: DAPI for nuclear staining.