

ROR1 Rabbit mAb

Catalog No.: A24888 **Recombinant**

Basic Information

Observed MW

Calculated MW

104kDa

Category

Primary antibody

Applications

FC

Cross-Reactivity

Human

CloneNo number

ARC63587

Background

This gene encodes a receptor tyrosine kinase-like orphan receptor that modulates neurite growth in the central nervous system. The encoded protein is a glycosylated type I membrane protein that belongs to the ROR subfamily of cell surface receptors. It is a pseudokinase that lacks catalytic activity and may interact with the non-canonical Wnt signalling pathway. This gene is highly expressed during early embryonic development but expressed at very low levels in adult tissues. Increased expression of this gene is associated with B-cell chronic lymphocytic leukaemia. Alternative splicing results in multiple transcript variants encoding different isoforms.

Recommended Dilutions

FC 1:500 - 1:1000

Immunogen Information

Gene ID

4919

Swiss Prot

Q01973

Immunogen

Recombinant fusion protein containing a sequence corresponding to amino acids 24-403 of Human ROR1 (NP_005003.2).

Synonyms

NTRKR1; dj537F10.1; ROR1

Contact

☎ | 400-999-6126

✉ | cn.market@abclonal.com.cn

🌐 | www.abclonal.com.cn

Product Information

Source

Rabbit

Isotype

IgG1

Purification

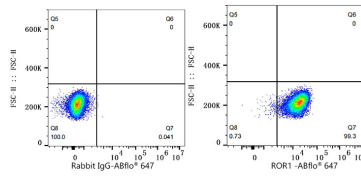
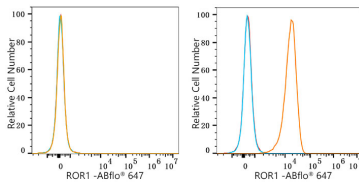
Affinity purification

Storage

Store at -20°C. Avoid freeze / thaw cycles.

Buffer: PBS with 0.05% proclin300,0.05% BSA,50% glycerol,pH7.3.

Validation Data



Flow cytometry: 1×10^6 HEL cells (negative control, left) and MDA-MB-231 cells (right) were surface-stained with ROR1 Rabbit mAb (A24888, 2 $\mu\text{g}/\text{mL}$, orange line) or ABflo® 647 Rabbit IgG isotype control (A22070, 5 $\mu\text{g}/\text{mL}$, blue line), followed by Alexa Fluor® 647 conjugated goat anti-rabbit pAb staining. Non-fluorescently stained cells were used as blank control (red line).

Flow cytometry: 1×10^6 MDA-MB-231 cells were surface-stained with ABflo® 647 Rabbit IgG isotype control (A22070, 5 $\mu\text{g}/\text{mL}$, left) or ROR1 Rabbit mAb (A24888, 2 $\mu\text{g}/\text{mL}$, right).