

ABflo® 647 Rabbit anti-Human ENPP3/CD203c mAb

Catalog No.: A24891

Basic Information

Observed MW

Calculated MW

100kDa

Category

Primary antibody

Applications

FC

Cross-Reactivity

Human

CloneNo number

ARC63726-ABflo647

Conjugate

ABflo® 647. Ex:648nm. Em:664nm.

Recommended Dilutions

FC 5 µl per 10⁶ cells in
100 µl volume

Background

The protein encoded by this gene belongs to a series of ectoenzymes that are involved in hydrolysis of extracellular nucleotides. These ectoenzymes possess ATPase and ATP pyrophosphatase activities and are type II transmembrane proteins. Expression of the related rat mRNA has been found in a subset of immature glial cells and in the alimentary tract. The corresponding rat protein has been detected in the pancreas, small intestine, colon, and liver. The human mRNA is expressed in glioma cells, prostate, and uterus. Expression of the human protein has been detected in uterus, basophils, and mast cells. Two transcript variants, one protein coding and the other non-protein coding, have been found for this gene.

Immunogen Information

Gene ID

5169

Swiss Prot

O14638

Immunogen

Recombinant fusion protein containing a sequence corresponding to amino acids 551-875 of human ENPP3/CD203c (NP_005012.2).

Synonyms

B10; NPP3; PDNP3; CD203c; PD-IBETA

Contact

☎ | 400-999-6126

✉ | cn.market@abclonal.com.cn

🌐 | www.abclonal.com.cn

Product Information

Source

Rabbit

Isotype

IgG

Purification

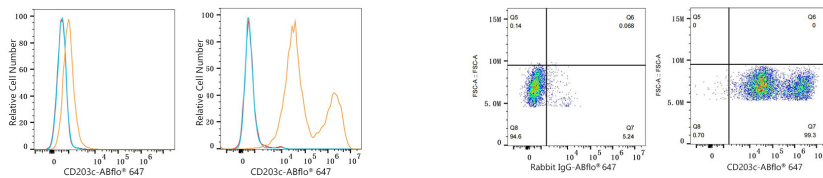
Affinity purification

Storage

Store at 2-8°C. Avoid freeze.

Buffer: PBS with 0.03% proclin300,0.2% BSA,pH7.3.

Validation Data



Flow cytometry: 1×10^6 293F cells (negative control, left) and 293F (Transfection, right) cells were surface-stained with ABflo® 647 Rabbit anti-Human ENPP3/CD203c mAb (A24891,5 μ l/Test, orange line) or ABflo® 647 Rabbit IgG isotype control (A22070,5 μ l/Test, blue line). Non-fluorescently stained cells were used as blank control (red line).

Flow cytometry: 1×10^6 293F (Transfection) cells were surface-stained with ABflo® 647 Rabbit IgG isotype control (A22070,5 μ l/Test, left) or ABflo® 647 Rabbit anti-Human ENPP3/CD203c mAb (A24891,5 μ l/Test, right).