

# ABflo® 594 Rabbit anti-Mouse/Rat CD54 mAb

Catalog No.: A24896

## Basic Information

---

### Observed MW

### Calculated MW

59kDa

### Category

Primary antibody

### Applications

FC

### Cross-Reactivity

Mouse, Rat

### CloneNo number

ARC63603-ABflo594

### Conjugate

ABflo® 594. Ex:588nm. Em:604nm.

## Recommended Dilutions

---

FC 5 µl per 10<sup>6</sup> cells in  
100 µl volume

## Background

---

This gene encodes an integral membrane protein that binds leukocyte adhesion protein LFA-1. It participates in the innate immune response.

## Immunogen Information

---

### Gene ID

15894

### Swiss Prot

P13597

### Immunogen

Recombinant fusion protein containing a sequence corresponding to amino acids 28-485 of mouse CD54(NP\_034623.1).

### Synonyms

CD54; Ly-47; Icam-1; MALA-2

## Contact

---

☎ | 400-999-6126

✉ | [cn.market@abclonal.com.cn](mailto:cn.market@abclonal.com.cn)

🌐 | [www.abclonal.com.cn](http://www.abclonal.com.cn)

## Product Information

---

### Source

Rabbit

### Isotype

IgG

### Purification

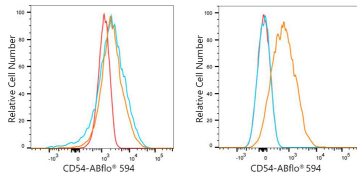
Affinity purification

### Storage

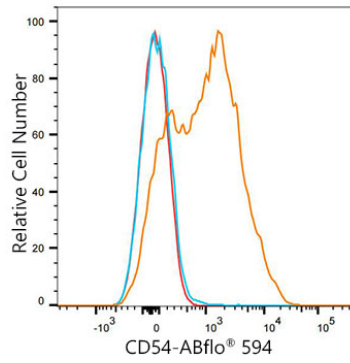
Store at 2-8°C. Avoid freeze.

Buffer: PBS with 0.03% proclin300,0.2% BSA,pH7.3.

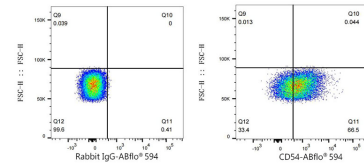
## Validation Data



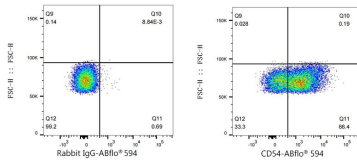
Flow cytometry:  $1 \times 10^6$  C2C12 cells (negative control, left) and Mouse thymocytes (right) were surface-stained with ABflo® 594 Rabbit anti-Mouse/Rat CD54 mAb (A24896,5  $\mu$ l/Test, orange line) or ABflo® 594 Rabbit IgG isotype control (A23821,5  $\mu$ l/Test, blue line). Non-fluorescently stained cells were used as blank control (red line).



Flow cytometry:  $1 \times 10^6$  Rat splenocytes were surface-stained with ABflo® 594 Rabbit anti-Mouse/Rat CD54 mAb (A24896,5  $\mu$ l/Test, orange line) or ABflo® 594 Rabbit IgG isotype control (A23821,5  $\mu$ l/Test, blue line). Non-fluorescently stained rat spleen cells were used as blank control (red line).



Flow cytometry:  $1 \times 10^6$  Mouse thymocytes were surface-stained with ABflo® 594 Rabbit IgG isotype control (A23821,5  $\mu$ l/Test, left) or ABflo® 594 Rabbit anti-Mouse/Rat CD54 mAb (A24896,5  $\mu$ l/Test, right).



Flow cytometry:  $1 \times 10^6$  Rat splenocytes were surface-stained with ABflo® 594 Rabbit IgG isotype control (A23821,5  $\mu$ l/Test, left) or ABflo® 594 Rabbit anti-Mouse/Rat CD54 mAb (A24896,5  $\mu$ l/Test, right).