

# ABflo® 594 Rabbit anti-Human ROR1 mAb

Catalog No.: A24902

## Basic Information

### Observed MW

### Calculated MW

104kDa

### Category

Primary antibody

### Applications

FC

### Cross-Reactivity

Human

### CloneNo number

ARC63587-ABflo594

### Conjugate

ABflo® 594. Ex:588nm. Em:604nm.

## Recommended Dilutions

FC 5 µl per 10<sup>6</sup> cells in  
100 µl volume

## Background

This gene encodes a receptor tyrosine kinase-like orphan receptor that modulates neurite growth in the central nervous system. The encoded protein is a glycosylated type I membrane protein that belongs to the ROR subfamily of cell surface receptors. It is a pseudokinase that lacks catalytic activity and may interact with the non-canonical Wnt signalling pathway. This gene is highly expressed during early embryonic development but expressed at very low levels in adult tissues. Increased expression of this gene is associated with B-cell chronic lymphocytic leukaemia. Alternative splicing results in multiple transcript variants encoding different isoforms.

## Immunogen Information

### Gene ID

4919

### Swiss Prot

Q01973

### Immunogen

Recombinant fusion protein containing a sequence corresponding to amino acids 24-403 of Human ROR1 (NP\_005003.2).

### Synonyms

NTRKR1; dj537F10.1

## Contact

☎ | 400-999-6126

✉ | [cn.market@abclonal.com.cn](mailto:cn.market@abclonal.com.cn)

🌐 | [www.abclonal.com.cn](http://www.abclonal.com.cn)

## Product Information

### Source

Rabbit

### Isotype

IgG

### Purification

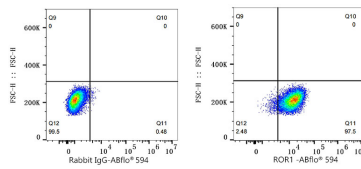
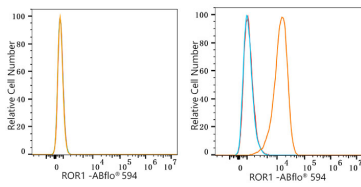
Affinity purification

### Storage

Store at 2-8°C. Avoid freeze.

Buffer: PBS with 0.03% proclin300,0.2% BSA,pH7.3.

## Validation Data



Flow cytometry:  $1 \times 10^6$  HEL cells (negative control, left) and MDA-MB-231 cells (right) were surface-stained with ABflo® 594 Rabbit anti-Human ROR1 mAb (A24902, 5  $\mu$ l/Test, orange line) or ABflo® 594 Rabbit IgG isotype control (A23821, 5  $\mu$ l/Test, blue line). Non-fluorescently stained cells were used as blank control (red line).

Flow cytometry:  $1 \times 10^6$  MDA-MB-231 cells were surface-stained with ABflo® 594 Rabbit IgG isotype control (A23821, 5  $\mu$ l/Test, left) or ABflo® 594 Rabbit anti-Human ROR1 mAb (A24902, 5  $\mu$ l/Test, right).