

I κ B α Rabbit mAb

Catalog No.: A24909

Recombinant

5 Publications

Basic Information

Observed MW

40 kDa

Calculated MW

35 kDa

Category

Primary antibody

Applications

WB, ELISA

Cross-Reactivity

Mouse, Rat

CloneNo number

ARC63567

Background

Enables NF-kappaB binding activity and heat shock protein binding activity. Involved in several processes, including cytoplasmic sequestering of NF-kappaB; leukocyte migration involved in inflammatory response; and liver regeneration. Acts upstream of or within cellular response to cytokine stimulus and cellular response to organic cyclic compound. Located in cytosol and nucleus. Part of protein-containing complex. Used to study gastritis; pulmonary emphysema; and sciatic neuropathy. Biomarker of several diseases, including acute necrotizing pancreatitis; alcoholic hepatitis; artery disease (multiple); middle cerebral artery infarction; and toxic shock syndrome. Human ortholog(s) of this gene implicated in several diseases, including childhood-onset asthma; hematologic cancer (multiple); hepatitis B; hepatitis C; and lung disease (multiple). Orthologous to human NFKBIA (NFKB inhibitor alpha).

Recommended Dilutions

WB 1:2000 - 1:7000**ELISA** Recommended starting concentration is 1 μ g/mL. Please optimize the concentration based on your specific assay requirements.

Immunogen Information

Gene ID

25493

Swiss Prot

Q63746

Immunogen

Recombinant protein (or fragment). This information is considered to be commercially sensitive.

SynonymsRL/IF-1; I κ B α

Contact

 | 400-999-6126 | cn.market@abclonal.com.cn | www.abclonal.com.cn

Product Information

Source

Rabbit

Isotype

IgG

Purification

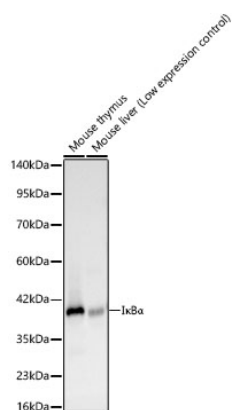
Affinity purification

Storage

Store at -20°C. Avoid freeze / thaw cycles.

Buffer: PBS containing 50% glycerol and 0.05% BSA, preserved with proclin300 or sodium azide (as specified on the Certificate of Analysis), pH 7.3.

Validation Data



Western blot analysis of various lysates, using IκBα Rabbit mAb (A24909) at 1:6000 dilution incubated overnight at 4°C.

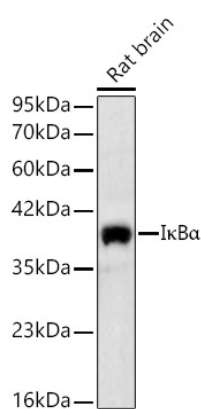
Secondary antibody: HRP-conjugated Goat anti-Rabbit IgG (H+L) (AS014) at 1:10000 dilution.

Lysates/proteins: 25 µg per lane.

Blocking buffer: 3% nonfat dry milk in TBST.

Detection: ECL Basic Kit (RM00020).

Exposure time: 30 s.



Western blot analysis of lysates from Rat brain using IκBα Rabbit mAb (A24909) at 1:6000 dilution incubated overnight at 4°C.

Secondary antibody: HRP-conjugated Goat anti-Rabbit IgG (H+L) (AS014) at 1:10000 dilution.

Lysates/proteins: 25 µg per lane.

Blocking buffer: 3% nonfat dry milk in TBST.

Detection: ECL Basic Kit (RM00020).

Exposure time: 90 s.