

POLR2L Rabbit pAb

Catalog No.: A2491

Basic Information

Observed MW

8kDa

Calculated MW

8kDa

Category

Primary antibody

Applications

ELISA, WB, IHC-P

Cross-Reactivity

Human, Mouse, Rat

Background

This gene encodes a subunit of RNA polymerase II, the polymerase responsible for synthesizing messenger RNA in eukaryotes. The product of this gene contains four conserved cysteines characteristic of an atypical zinc-binding domain. Like its counterpart in yeast, this subunit may be shared by the other two DNA-directed RNA polymerases.

Recommended Dilutions

| | |
|-------|----------------|
| WB | 1:500 - 1:1000 |
| IHC-P | 1:50 - 1:200 |

Immunogen Information

Gene ID

5441

Swiss Prot

P62875

Immunogen

Recombinant fusion protein containing a sequence corresponding to amino acids 1-67 of human POLR2L (NP_066951.1).

Synonyms

RBP10; RPB10; RPABC5; RPB7.6; hRPB7.6; RPB10beta; POLR2L

Contact

☎ | 400-999-6126

✉ | cn.market@abclonal.com.cn

🌐 | www.abclonal.com.cn

Product Information

Source

Rabbit

Isotype

IgG

Purification

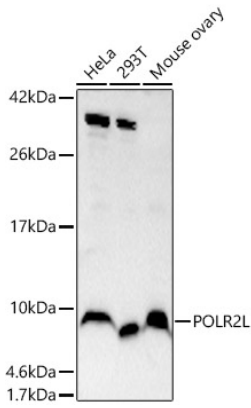
Affinity purification

Storage

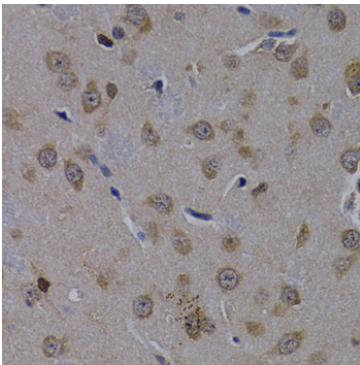
Store at -20°C. Avoid freeze / thaw cycles.

Buffer: PBS with 0.02% sodium azide, 50% glycerol, pH 7.3.

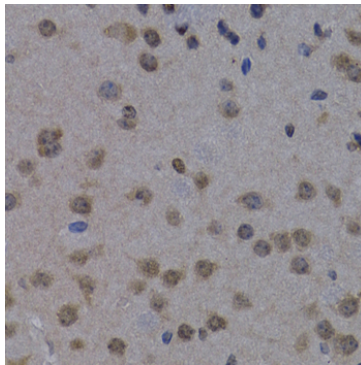
Validation Data



Western blot analysis of various lysates, using POLR2L Rabbit pAb (A2491) at 1:1000 dilution.
Secondary antibody: HRP Goat Anti-Rabbit IgG (H+L) (AS014) at 1:10000 dilution.
Lysates/proteins: 25 μ g per lane.
Blocking buffer: 3% nonfat dry milk in TBST.
Detection: ECL Basic Kit (RM00020).
Exposure time: 90s.



Immunohistochemistry analysis of paraffin-embedded rat brain using POLR2L Rabbit pAb (A2491) at dilution of 1:200 (40x lens). Perform microwave antigen retrieval with 10 mM PBS buffer pH 7.2 before commencing with IHC staining protocol.



Immunohistochemistry analysis of paraffin-embedded mouse brain using POLR2L Rabbit pAb (A2491) at dilution of 1:200 (40x lens). Perform microwave antigen retrieval with 10 mM PBS buffer pH 7.2 before commencing with IHC staining protocol.