

DcR1/CD263 Rabbit mAb

Catalog No.: A24912 **Recombinant**

Basic Information

Observed MW

62kDa

Calculated MW

27kDa

Category

Primary antibody

Applications

ELISA, WB, IHC-P, FC

Cross-Reactivity

Human

CloneNo number

ARC63904

Background

The protein encoded by this gene is a member of the TNF-receptor superfamily. This receptor contains an extracellular TRAIL-binding domain and a transmembrane domain, but no cytoplasmic death domain. This receptor is not capable of inducing apoptosis, and is thought to function as an antagonistic receptor that protects cells from TRAIL-induced apoptosis. This gene was found to be a p53-regulated DNA damage-inducible gene. The expression of this gene was detected in many normal tissues but not in most cancer cell lines, which may explain the specific sensitivity of cancer cells to the apoptosis-inducing activity of TRAIL.

Recommended Dilutions

WB	1:1000 - 1:5000
IHC-P	1:50 - 1:200
FC	1:100-1:500

Immunogen Information

Gene ID

8794

Swiss Prot

O14798

Immunogen

Recombinant fusion protein containing a sequence corresponding to amino acids 26-235 of human DcR1/CD263 (NP_003832.3).

Synonyms

TNFRSF10C; CD263; DCR1; DCR1-TNFR; LIT; TRAIL-R3; TRAILR3; TRID; TNF receptor superfamily member 10c; DcR1/CD263

Contact

☎ | 400-999-6126

✉ | cn.market@abclonal.com.cn

🌐 | www.abclonal.com.cn

Product Information

Source

Rabbit

Isotype

IgG

Purification

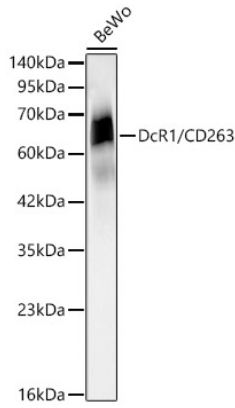
Affinity purification

Storage

Store at -20°C. Avoid freeze / thaw cycles.

Buffer: PBS with 0.05% proclin300, 0.05% BSA, 50% glycerol, pH7.3.

Validation Data



Western blot analysis of lysates from BeWo cells using DcR1/CD263 Rabbit mAb (A24912) at 1:2000 dilution.

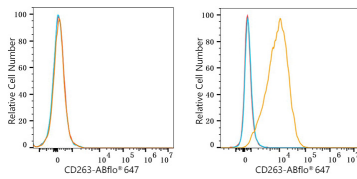
Secondary antibody: HRP Goat Anti-Rabbit IgG (H+L) (AS014) at 1:10000 dilution.

Lysates/proteins: 25ug per lane.

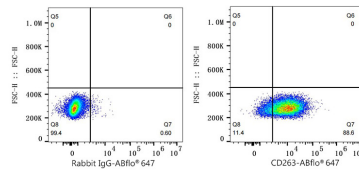
Blocking buffer: 3% nonfat dry milk in TBST.

Detection: ECL Basic Kit (RM00020).

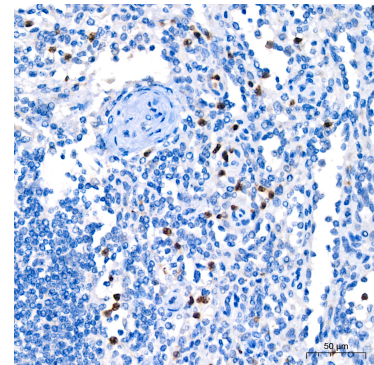
Exposure time: 30s.



Flow cytometry: 1×10^6 K-562 cells (Low Expression, left) and BEWO cells (right) were surface-stained with DcR1/CD263 Rabbit mAb (A24912, 2 $\mu\text{g}/\text{mL}$, orange line) or ABflo® 647 Rabbit IgG isotype control (A22070, 5 $\mu\text{l}/\text{Test}$, blue line), followed by Alexa Fluor® 647 conjugated goat anti-rabbit pAb staining. Non-fluorescently stained cells were used as blank control (red line).



Flow cytometry: 1×10^6 BEWO cells were surface-stained with ABflo® 647 Rabbit IgG isotype control (A22070, 5 $\mu\text{l}/\text{Test}$, left) or DcR1/CD263 Rabbit mAb (A24912, 2 $\mu\text{g}/\text{mL}$, right).



Immunohistochemistry analysis of DcR1/CD263 in paraffin-embedded human spleen tissue using DcR1/CD263 Rabbit mAb (A24912) at a dilution of 1:200 (40x lens). High pressure antigen retrieval was performed with 0.01 M citrate buffer (pH 6.0) prior to IHC staining.