

ABflo® 488 Rabbit anti-Mouse CD161c/NK1.1 mAb

Catalog No.: A24922

Basic Information

Observed MW

Refer to figures

Calculated MW

25kDa

Category

Primary antibody

Applications

FC

Cross-Reactivity

Mouse

CloneNo number

ARC57666-ABf488

Conjugate

ABflo® 488. Ex:491nm. Em:516nm.

Recommended Dilutions

FC 5 µl per 10⁶ cells in
100 µl volume

Background

Enables identical protein binding activity and signaling receptor activity. Acts upstream of or within natural killer cell activation and positive regulation of natural killer cell mediated cytotoxicity. Located in external side of plasma membrane. Is integral component of plasma membrane. Is expressed in thymus primordium. Orthologous to human KLRB1 (killer cell lectin like receptor B1).

Immunogen Information

Gene ID

17059

Swiss Prot

P27814

Immunogen

Recombinant fusion protein containing a sequence corresponding to amino acids 67-223 of mouse CD161c/NK1.1 (NP_001153376.2).

Synonyms

Nk1; Ly59; Nk-1; CD161; Ly-59; Ly55c; NK1.1; NKRP1; Nk1.2; Klrb1b; NK-RP1; Nk-1.2; Nkrp1b; Nkrp1c; ly-55c; NKRP140; NKR-P1.9

Contact

☎ | 400-999-6126

✉ | cn.market@abclonal.com.cn

🌐 | www.abclonal.com.cn

Product Information

Source

Rabbit

Isotype

IgG

Purification

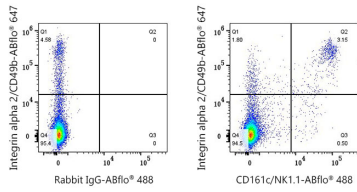
Affinity purification

Storage

Store at 2-8°C. Avoid freeze.

Buffer: PBS with 0.03% proclin300,0.2% BSA,pH7.3.

Validation Data



Flow cytometry: 1×10^6 C57BL/6 mouse splenocytes were surface-stained with ABflo® 647 Rabbit anti-Mouse Integrin alpha 2/CD49b mAb (A26560, 5 μ l/Test) and ABflo® 488 Rabbit IgG isotype control (A22069, 5 μ l/Test, left) or ABflo® 488 Rabbit anti-Mouse CD161c/NK1.1 mAb (A24922, 5 μ l/Test, right).