

ABflo® 594 Rabbit anti-Mouse IgG1 mAb

Catalog No.: A24926

Basic Information

Observed MW

Calculated MW

36kDa

Category

Primary antibody

Applications

FC

Cross-Reactivity

Mouse

CloneNo number

ARC63967-ABflo594

Conjugate

ABflo® 594. Ex:588nm. Em:604nm.

Recommended Dilutions

FC 5 µl per 10⁶ cells in
100 µl volume

Background

Mouse IgG1 is a subtype of immunoglobulin G antibody that is produced by B cells in response to an antigen. It is the most abundant IgG subtype in the serum and plays a crucial role in the adaptive immune response. Mouse IgG1 is composed of two heavy chains and two light chains, and it is involved in opsonization, complement activation, and antibody-dependent cell-mediated cytotoxicity. It is also involved in the regulation of immune responses, including the activation of T cells and the inhibition of B cell activation. Mouse IgG1 is widely used in research and diagnostic applications, including ELISA, Western blotting, and immunohistochemistry. It is also used in therapeutic applications, such as immunotherapy and vaccine development.

Immunogen Information

Gene ID

Swiss Prot

P01868

Immunogen

Recombinant fusion protein containing a sequence corresponding to amino acids 98-324 of mouse IgG1(P01868).

Synonyms

IgG1

Contact

☎ | 400-999-6126

✉ | cn.market@abclonal.com.cn

🌐 | www.abclonal.com.cn

Product Information

Source

Rabbit

Isotype

IgG

Purification

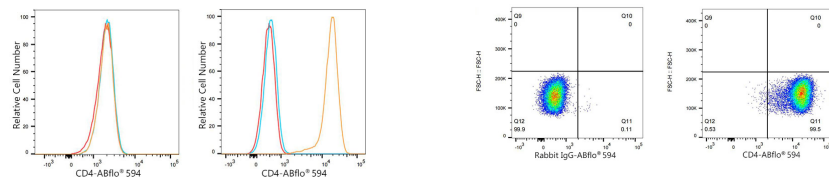
Affinity purification

Storage

Store at 2-8°C. Avoid freeze.

Buffer: PBS with 0.03% proclin300,0.2% BSA,pH7.3.

Validation Data



Flow cytometry: 1×10^6 PC-3 cells (negative control, left) and THP-1 cells (right) were surface-stained with Mouse anti-Human CD4 mAb (IgG1, κ , orange line) or ABflo® 594 Rabbit IgG isotype control (A23821,5 $\mu\text{l}/\text{Test}$, blue line), followed by ABflo® 594 Rabbit anti-Mouse IgG1 mAb (A24926,5 $\mu\text{l}/\text{Test}$) staining. Non-fluorescently stained cells were used as blank control (red line).

Flow cytometry: 1×10^6 THP-1 cells were surface-stained with ABflo® 594 Rabbit IgG isotype control (A23821,5 $\mu\text{l}/\text{Test}$, left) or Mouse anti-human CD4 mAb (IgG1, κ , right). ABflo® 594 Rabbit anti-Mouse IgG1 mAb (A24926,5 $\mu\text{l}/\text{Test}$) was used as a secondary antibody.