

ABflo® 594 Mouse anti-Rabbit IgG (Fc) mAb

Catalog No.: A24931

Basic Information

Observed MW

Calculated MW

35kDa

Category

Primary antibody

Applications

FC

Cross-Reactivity

Rabbit

CloneNo number

AMC50001-ABf594

Conjugate

ABflo® 594. Ex:588nm. Em:604nm.

Recommended Dilutions

FC 5 µl per 10⁶ cells in
100 µl volume

Background

Secondary antibodies are affinity-purified antibodies which will work with target-specific primary antibody in the detection, sorting or purification of its specified target. Secondary antibodies offer increased versatility enabling users to use many detection systems (e.g. HRP, AP, fluorescence). They can also provide greater sensitivity through signal amplification as multiple secondary antibodies. Most commonly, secondary antibodies are generated by immunizing the host animal (different from host species of primary antibody) with a pooled population of normal immunoglobulins from the host species of primary antibody and can be further purified and modified (i.e. antibody fragmentation, label conjugation, etc.) to ensure well-characterized specificity to corresponding normal immunoglobulins.

Immunogen Information

Gene ID

Swiss Prot

P01870

Immunogen

Recombinant fusion protein containing a sequence corresponding to amino acids 96-323 of rabbit IgG (Fc) (P01870).

Synonyms

Contact

☎ | 400-999-6126

✉ | cn.market@abclonal.com.cn

🌐 | www.abclonal.com.cn

Product Information

Source

Mouse

Isotype

mouse IgG1

Purification

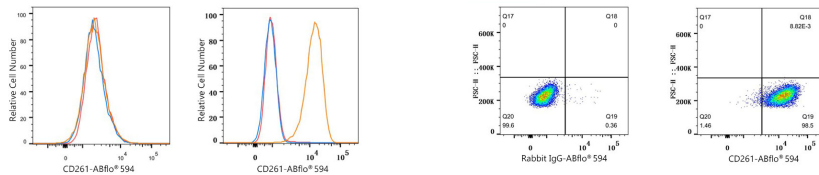
Affinity purification

Storage

Store at 2-8°C. Avoid freeze.

Buffer: PBS with 0.03% proclin300,pH7.3.

Validation Data



Flow cytometry: 1×10^6 BEWO cells (negative control, left) and HeLa cells (right) were surface-stained with Rabbit anti-Human CD261/TRAIL-R1 mAb ($2 \mu\text{g}/\text{mL}$, orange line) or ABflo® 594 Rabbit IgG isotype control ($2.3821,5 \mu\text{l}/\text{Test}$, blue line), then stained with ABflo® 594 Mouse anti-Rabbit IgG (Fc) mAb ($2.4931,5 \mu\text{l}/\text{Test}$) was used as a secondary antibody. Non-fluorescently stained cells were used as blank control (red line).

Flow cytometry: 1×10^6 HeLa cells were surface-stained with ABflo® 594 Rabbit IgG isotype control ($2.3821,5 \mu\text{l}/\text{Test}$, left) or Rabbit anti-Human CD261/TRAIL-R1 mAb ($2 \mu\text{g}/\text{mL}$, right). ABflo® 594 Mouse anti-Rabbit IgG (Fc) mAb ($2.4931,5 \mu\text{l}/\text{Test}$) was used as a secondary antibody.