

ABflo® 647 Rabbit anti-Mouse CD16 mAb

Catalog No.: A24936

Basic Information

Observed MW

Calculated MW

30kDa

Category

Primary antibody

Applications

FC

Cross-Reactivity

Mouse

CloneNo number

ARC64354-ABflo647

Conjugate

ABflo® 647. Ex:648nm. Em:664nm.

Background

Enables IgG binding activity and IgG receptor activity. Acts upstream of or within several processes, including antibody-dependent cellular cytotoxicity; phagocytosis; and positive regulation of hypersensitivity. Located in external side of plasma membrane. Is expressed in liver and spleen. Human ortholog(s) of this gene implicated in several diseases, including autoimmune disease (multiple); dengue disease (multiple); hematologic cancer (multiple); leukopenia (multiple); and malaria (multiple). Orthologous to human FCGR2A (Fc fragment of IgG receptor IIa).

Recommended Dilutions

FC 5 µl per 10⁶ cells in
100 µl volume

Immunogen Information

Gene ID

14131

Swiss Prot

A0A0B4J1M6

Immunogen

Recombinant fusion protein containing a sequence corresponding to amino acids 38-207 of mouse CD16(NP_034318.2).

Synonyms

CD16

Contact

☎ | 400-999-6126

✉ | cn.market@abclonal.com.cn

🌐 | www.abclonal.com.cn

Product Information

Source

Rabbit

Isotype

IgG

Purification

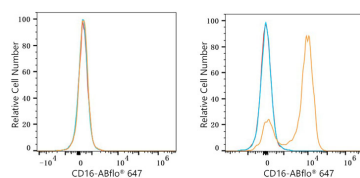
Affinity purification

Storage

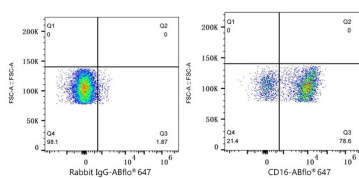
Store at 2-8°C. Avoid freeze.

Buffer: PBS with 0.03% proclin300,0.2% BSA,pH7.3.

Validation Data



Flow cytometry: 1×10^6 Neuro-2a cells (negative control, left) and C57BL/6 mouse Splenocytes (right) were surface-stained with ABflo® 647 Rabbit anti-Mouse CD16 mAb (A24936, 5 µl/Test, orange line) or ABflo® 647 Rabbit IgG isotype control (A22070, 5 µl/Test, blue line). Non-fluorescently stained cells were used as blank control (red line).



Flow cytometry: 1×10^6 C57BL/6 mouse Splenocytes were surface-stained with ABflo® 647 Rabbit IgG isotype control (A22070, 5 µl/Test, left) or ABflo® 647 Rabbit anti-Mouse CD16 mAb (A24936, 5 µl/Test, right).