

# ABflo® 647 Rabbit anti-Mouse CD69 mAb

Catalog No.: A24939

## Basic Information

### Observed MW

### Calculated MW

22kDa

### Category

Primary antibody

### Applications

FC

### Cross-Reactivity

Mouse

### CloneNo number

ARC64627-ABflo647

### Conjugate

ABflo® 647. Ex:648nm. Em:664nm.

## Background

Predicted to enable calcium ion binding activity and identical protein binding activity. Located in external side of plasma membrane. Orthologous to human CD69 (CD69 molecule).

## Recommended Dilutions

FC 5 µl per 10<sup>6</sup> cells in  
100 µl volume

## Immunogen Information

### Gene ID

12515

### Swiss Prot

P37217

### Immunogen

Recombinant fusion protein containing a sequence corresponding to aminoacids 64-199 of mouse CD69(NP\_001028294.1).

### Synonyms

AIM; VEA; 5830438K24Rik

## Contact

 | 400-999-6126

 | [cn.market@abclonal.com.cn](mailto:cn.market@abclonal.com.cn)

 | [www.abclonal.com.cn](http://www.abclonal.com.cn)

## Product Information

### Source

Rabbit

### Isotype

IgG

### Purification

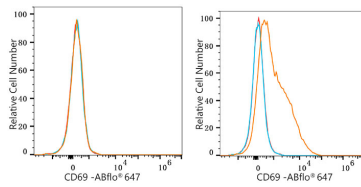
Affinity purification

### Storage

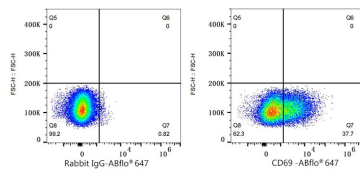
Store at 2-8°C. Avoid freeze.

Buffer: PBS with 0.03% proclin300,0.2% BSA,pH7.3.

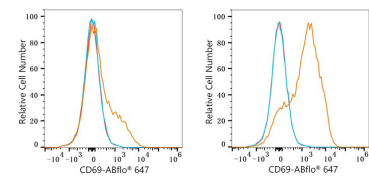
## Validation Data



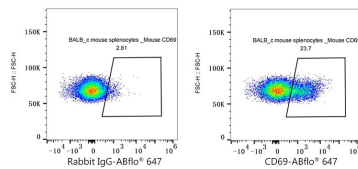
Flow cytometry:  $1 \times 10^6$  NIH/3T3 cells (negative control, left) and CTLL-2 cells (right) were surface-stained with ABflo® 647 Rabbit anti-Mouse CD69 mAb (A24939, 5  $\mu$ l/Test, orange line) or ABflo® 647 Rabbit IgG isotype control (A22070, 5  $\mu$ l/Test, blue line). Non-fluorescently stained cells were used as blank control (red line).



Flow cytometry:  $1 \times 10^6$  CTLL-2 cells were surface-stained with ABflo® 647 Rabbit IgG isotype control (A22070, 5  $\mu$ l/Test, left) or ABflo® 647 Rabbit anti-Mouse CD69 mAb (A24939, 5  $\mu$ l/Test, right).



Flow cytometry:  $1 \times 10^6$  BALB/c mouse splenocytes cells (negative control, left) and BALB/c mouse splenocytes cells (treated with 10 ng/mL PMA for 5 hours, right) were surface-stained with ABflo® 647 Rabbit anti-Mouse CD69 mAb (A24939, 5  $\mu$ l/Test, orange line) or ABflo® 647 Rabbit IgG isotype control (A22070, 5  $\mu$ l/Test, blue line). Non-fluorescently stained cells were used as blank control (red line).



Flow cytometry:  $1 \times 10^6$  BALB/c mouse splenocytes cells (treated with 10 ng/mL PMA for 5 hours) were surface-stained with ABflo® 647 Rabbit IgG isotype control (A22070, 5  $\mu$ l/Test, left) or ABflo® 647 Rabbit anti-Mouse CD69 mAb (A24939, 5  $\mu$ l/Test, right).