

# CD69 Rabbit mAb

Catalog No.: A24941 **Recombinant**

## Basic Information

### Observed MW

**Calculated MW**  
22kDa

**Category**  
Primary antibody

**Applications**  
FC

**Cross-Reactivity**  
Mouse

**CloneNo number**  
ARC64627

## Background

Predicted to enable calcium ion binding activity and identical protein binding activity. Located in external side of plasma membrane. Orthologous to human CD69 (CD69 molecule).

## Recommended Dilutions

FC 1:100 - 1:500

## Immunogen Information

Gene ID	Swiss Prot
12515	P37217

### Immunogen

Recombinant fusion protein containing a sequence corresponding to aminoacids 64-199 of mouse CD69(NP\_001028294.1).

### Synonyms

AIM; VEA; 5830438K24Rik; CD69

## Contact

 | 400-999-6126

 | [cn.market@abclonal.com.cn](mailto:cn.market@abclonal.com.cn)

 | [www.abclonal.com.cn](http://www.abclonal.com.cn)

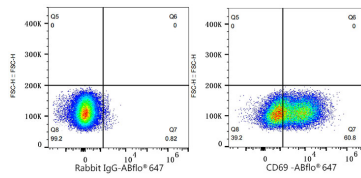
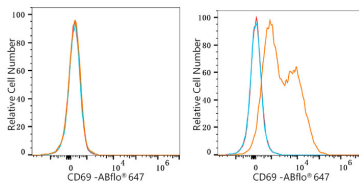
## Product Information

Source	Isotype	Purification
Rabbit	IgG	Affinity purification

### Storage

Store at -20°C. Avoid freeze / thaw cycles.  
Buffer: PBS with 0.05% proclin300,0.05% BSA,50% glycerol,pH7.3.

## Validation Data



Flow cytometry:  $1 \times 10^6$  NIH/3T3 cells (negative control, left) and CTLL-2 cells (right) were surface-stained with CD69 Rabbit mAb (A24941, 2  $\mu\text{g}/\text{mL}$ , orange line) or ABflo® 647 Rabbit IgG isotype control (A22070, 5  $\mu\text{l}/\text{Test}$ , blue line), followed by Alexa Fluor® 647 conjugated goat anti-rabbit pAb staining. Non-fluorescently stained cells were used as blank control (red line).

Flow cytometry:  $1 \times 10^6$  CTLL-2 cells were surface-stained with ABflo® 647 Rabbit IgG isotype control (A22070, 5  $\mu\text{l}/\text{Test}$ , left) or CD69 Rabbit mAb (A24941, 2  $\mu\text{g}/\text{mL}$ , right).