

ABflo® 647 Rabbit anti-Mouse CD8a mAb

Catalog No.: A24942

Basic Information

Observed MW

Refer to figures

Calculated MW

27KDa

Category

Primary antibody

Applications

FC

Cross-Reactivity

Mouse

CloneNo number

ARC60676-ABflo647

Conjugate

ABflo® 647. Ex:648nm. Em:664nm.

Recommended Dilutions

FC 5 µl per 10⁶ cells in
100 µl volume

Background

Enables identical protein binding activity. Acts upstream of or within several processes, including cytotoxic T cell differentiation; defense response to virus; and positive regulation of calcium-mediated signaling. Located in external side of plasma membrane. Is expressed in several structures, including endocrine gland; exocrine gland; genitourinary system; gut; and hemolymphoid system gland. Orthologous to human CD8A (CD8a molecule).

Immunogen Information

Gene ID

12525

Swiss Prot

P01731

Immunogen

Recombinant fusion protein containing a sequence corresponding to amino acids 28-196 of mouse CD8a (NP_001074579.1).

Synonyms

Ly-2; Ly-B; Ly-35; Lyt-2

Contact

 | 400-999-6126

 | cn.market@abclonal.com.cn

 | www.abclonal.com.cn

Product Information

Source

Rabbit

Isotype

IgG

Purification

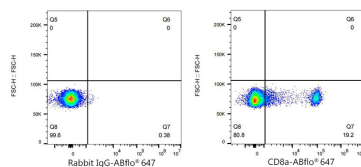
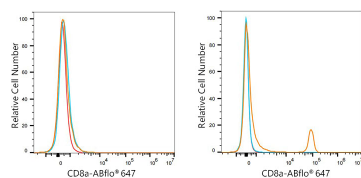
Affinity purification

Storage

Store at 2-8°C. Avoid freeze.

Buffer: PBS with 0.03% proclin300, 0.2% BSA, pH7.3.

Validation Data



Flow cytometry: 1×10^6 Raw264.7 cells (negative control, left) and C57BL/6 mouse Splenocytes (right) were surface-stained with ABflo® 647 Rabbit anti-Mouse CD8a mAb (A24942, 5 µl/Test, orange line) or ABflo® 647 Rabbit IgG isotype control (A22070, 5 µl/Test, blue line). Non-fluorescently stained cells were used as blank control (red line).

Flow cytometry: 1×10^6 C57BL/6 mouse Splenocytes were surface-stained with ABflo® 647 Rabbit IgG isotype control (A22070, 5 µl/Test, left) or ABflo® 647 Rabbit anti-Mouse CD8a mAb (A24942, 5 µl/Test, right).