

# [KD Validated] ZNF143 Rabbit mAb

Catalog No.: A24947 **Recombinant**

## Basic Information

### Observed MW

95kDa

### Calculated MW

69kDa

### Category

Primary antibody

### Applications

ELISA, WB, IHC-P, IF/ICC

### Cross-Reactivity

Human, Mouse, Rat

### CloneNo number

ARC62979

## Background

Enables DNA-binding transcription activator activity, RNA polymerase II-specific and RNA polymerase II cis-regulatory region sequence-specific DNA binding activity. Involved in positive regulation of snRNA transcription by RNA polymerase II. Predicted to be located in nucleoplasm.

## Recommended Dilutions

WB	1:1000 - 1:5000
IHC-P	1:50 - 1:200
IF/ICC	1:50 - 1:200

## Immunogen Information

### Gene ID

7702

### Swiss Prot

P52747

### Immunogen

Recombinant fusion protein containing a sequence corresponding to amino acids 592-638 of human ZNF143 (NP\_003433.3).

### Synonyms

SBF; STAF; pHZ-1; [KD Validated] ZNF143

## Contact

☎	400-999-6126
✉	cn.market@abclonal.com.cn
🌐	www.abclonal.com.cn

## Product Information

### Source

Rabbit

### Isotype

IgG

### Purification

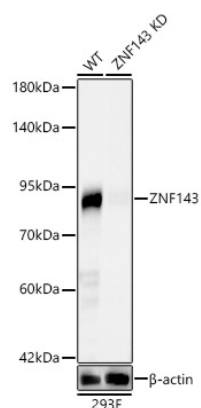
Affinity purification

### Storage

Store at -20°C. Avoid freeze / thaw cycles.

Buffer: PBS with 0.05% proclin300, 0.05% BSA, 50% glycerol, pH7.3.

## Validation Data



Western blot analysis of lysates from wild type (WT) and ZNF143 knockdown (KD) 293F cells using [KD Validated] ZNF143 Rabbit mAb (A24947) at 1:2000 dilution.

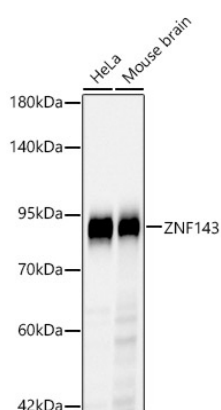
Secondary antibody: HRP Goat Anti-Rabbit IgG (H+L) (AS014) at 1:10000 dilution.

Lysates/proteins: 25ug per lane.

Blocking buffer: 3% nonfat dry milk in TBST.

Detection: ECL Basic Kit (RM00020).

Exposure time: 90s.



Western blot analysis of various lysates, using [KD Validated] ZNF143 Rabbit mAb (A24947) at 1:2000 dilution.

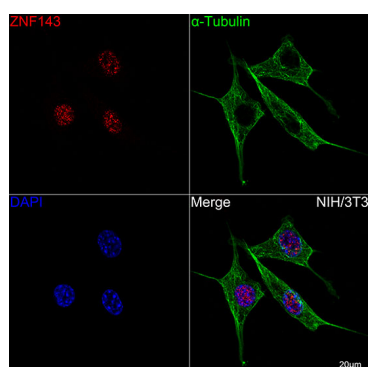
Secondary antibody: HRP Goat Anti-Rabbit IgG (H+L) (AS014) at 1:10000 dilution.

Lysates/proteins: 25ug per lane.

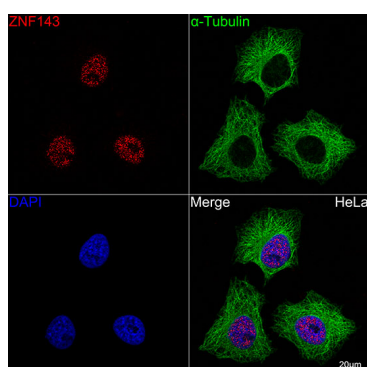
Blocking buffer: 3% nonfat dry milk in TBST.

Detection: ECL Basic Kit (RM00020).

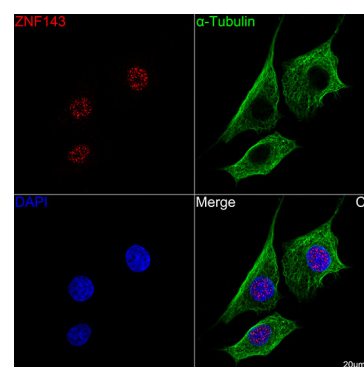
Exposure time: 90s.



Confocal imaging of NIH/3T3 cells using [KD Validated] ZNF143 Rabbit mAb (A24947, dilution 1:200) followed by a further incubation with Cy3 Goat Anti-Rabbit IgG (H+L) (AS007, dilution 1:500) (Red). The cells were counterstained with  $\alpha$ -Tubulin Mouse mAb (AC012, dilution 1:400) followed by incubation with ABflo® 488-conjugated Goat Anti-Mouse IgG (H+L) Ab (AS076, dilution 1:500) (Green). DAPI was used for nuclear staining (Blue). Objective: 100x.

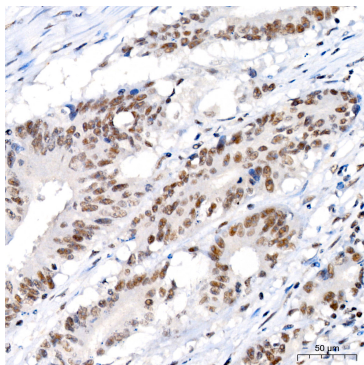


Confocal imaging of HeLa cells using [KD Validated] ZNF143 Rabbit mAb (A24947, dilution 1:200) followed by a further incubation with Cy3 Goat Anti-Rabbit IgG (H+L) (AS007, dilution 1:500) (Red). The cells were counterstained with  $\alpha$ -Tubulin Mouse mAb (AC012, dilution 1:400) followed by incubation with ABflo® 488-conjugated Goat Anti-Mouse IgG (H+L) Ab (AS076, dilution 1:500) (Green). DAPI was used for nuclear staining (Blue). Objective: 100x.

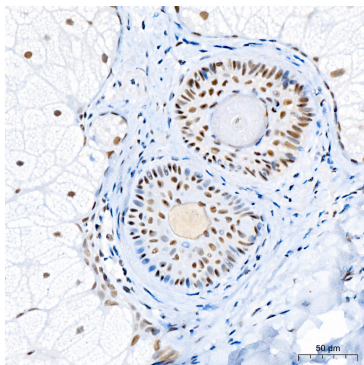


Confocal imaging of C6 cells using [KD Validated] ZNF143 Rabbit mAb (A24947, dilution 1:200) followed by a further incubation with Cy3 Goat Anti-Rabbit IgG (H+L) (AS007, dilution 1:500) (Red). The cells were counterstained with  $\alpha$ -Tubulin Mouse mAb (AC012, dilution 1:400) followed by incubation with ABflo® 488-conjugated Goat Anti-Mouse IgG (H+L) Ab (AS076, dilution 1:500) (Green). DAPI was used for nuclear staining (Blue). Objective: 100x.

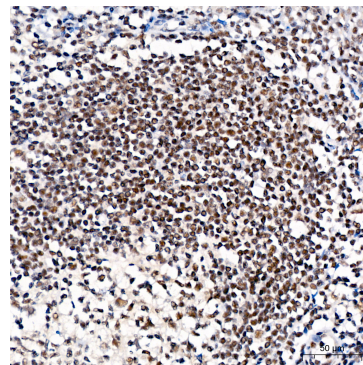
## Validation Data



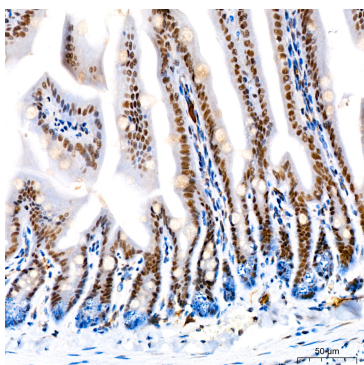
Immunohistochemistry analysis of ZNF143 in paraffin-embedded human colon carcinoma tissue using [KD Validated] ZNF143 Rabbit mAb (A24947) at a dilution of 1:200 (40x lens).High pressure antigen retrieval was performed with 0.01 M citrate buffer (pH 6.0) prior to IHC staining.



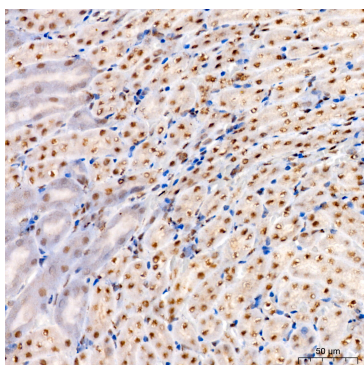
Immunohistochemistry analysis of ZNF143 in paraffin-embedded human skin tissue using [KD Validated] ZNF143 Rabbit mAb (A24947) at a dilution of 1:200 (40x lens).High pressure antigen retrieval was performed with 0.01 M citrate buffer (pH 6.0) prior to IHC staining.



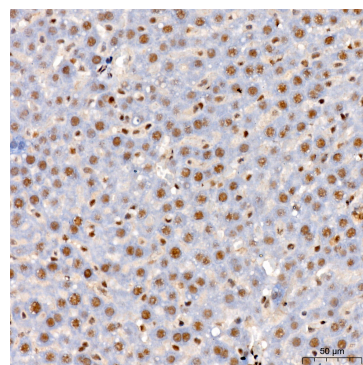
Immunohistochemistry analysis of ZNF143 in paraffin-embedded human tonsil tissue using [KD Validated] ZNF143 Rabbit mAb (A24947) at a dilution of 1:200 (40x lens).High pressure antigen retrieval was performed with 0.01 M citrate buffer (pH 6.0) prior to IHC staining.



Immunohistochemistry analysis of ZNF143 in paraffin-embedded mouse intestin tissue using [KD Validated] ZNF143 Rabbit mAb (A24947) at a dilution of 1:200 (40x lens).High pressure antigen retrieval was performed with 0.01 M citrate buffer (pH 6.0) prior to IHC staining.



Immunohistochemistry analysis of ZNF143 in paraffin-embedded mouse kidney tissue using [KD Validated] ZNF143 Rabbit mAb (A24947) at a dilution of 1:200 (40x lens).High pressure antigen retrieval was performed with 0.01 M citrate buffer (pH 6.0) prior to IHC staining.



Immunohistochemistry analysis of ZNF143 in paraffin-embedded rat liver tissue using [KD Validated] ZNF143 Rabbit mAb (A24947) at a dilution of 1:200 (40x lens).High pressure antigen retrieval was performed with 0.01 M citrate buffer (pH 6.0) prior to IHC staining.