

# ABflo® 488 Rabbit anti-Human CD101/IGSF2 mAb

Catalog No.: A24956

## Basic Information

### Observed MW

**Calculated MW**  
115kDa

**Category**  
Primary antibody

**Applications**  
IF/ICC,FC

**Cross-Reactivity**  
Human

**CloneNo number**  
ARC62615

**Conjugate**  
ABflo® 488. Ex:491nm. Em:516nm.

## Background

Predicted to enable hydrolase activity, acting on carbon-nitrogen (but not peptide) bonds, in cyclic amides. Predicted to be involved in cell surface receptor signaling pathway. Predicted to act upstream of or within positive regulation of myeloid leukocyte differentiation. Located in extracellular exosome.

## Recommended Dilutions

<b>IF/ICC</b>	1:50 - 1:200
<b>FC</b>	5 µl per 10 <sup>6</sup> cells in 100 µl volume

## Immunogen Information

<b>Gene ID</b> 9398	<b>Swiss Prot</b> Q93033
------------------------	-----------------------------

### Immunogen

Recombinant protein (or fragment). This information is considered to be commercially sensitive.

### Synonyms

V7; IGSF2; EWI-101

## Contact

	400-999-6126
	<a href="mailto:cn.market@abclonal.com.cn">cn.market@abclonal.com.cn</a>
	<a href="http://www.abclonal.com.cn">www.abclonal.com.cn</a>

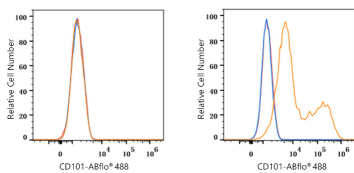
## Product Information

<b>Source</b> Rabbit	<b>Isotype</b> IgG	<b>Purification</b> Affinity purification
-------------------------	-----------------------	--

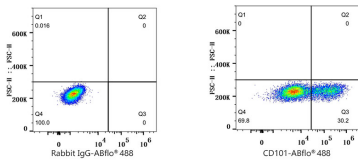
### Storage

Store at 2-8°C. Avoid freeze.  
Buffer: PBS containing 0.2% BSA, preserved with proclin300 or sodium azide (as specified on the Certificate of Analysis), pH 7.3.

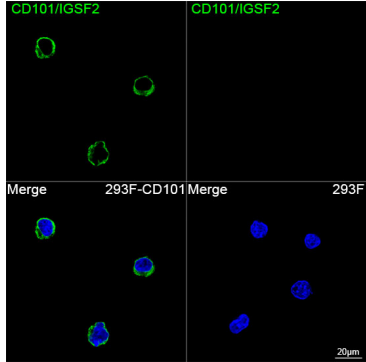
Validation Data



Flow cytometry: 1X10<sup>6</sup> 293F cells (negative control, left) and 293F (Transfection, right) cells were surface-stained with ABflo® 488 Rabbit anti-Human CD101/IGSF2 mAb (A24956, 5 µl/Test, orange line) or ABflo® 488 Rabbit IgG isotype control (A22069, 5 µl/Test, blue line). Non-fluorescently stained cells were used as blank control (red line).



Flow cytometry: 1X10<sup>6</sup> 293F (Transfection) cells were surface-stained with ABflo® 488 Rabbit IgG isotype control (A22069, 5 µl/Test, left) or ABflo® 488 Rabbit anti-Human CD101/IGSF2 mAb (A24956, 5 µl/Test, right).



Confocal imaging of 293F cells transfected with CD101 using ABflo® 488 Rabbit anti-Human CD101/IGSF2 mAb (A24956, dilution 1:100). DAPI was used for nuclear staining (Blue). Objective: 100x.