

ABflo® 594 Rabbit anti-Human CD101/IGSF2 mAb

Catalog No.: A24958

Basic Information

Observed MW

Calculated MW

115kDa

Category

Primary antibody

Applications

IF/ICC,FC

Cross-Reactivity

Human

CloneNo number

ARC62615-ABflo594

Conjugate

ABflo® 594. Ex:588nm. Em:604nm.

Recommended Dilutions

IF/ICC 1:50 - 1:200

FC 5 µl per 10⁶ cells in
100 µl volume

Background

Predicted to enable hydrolase activity, acting on carbon-nitrogen (but not peptide) bonds, in cyclic amides. Predicted to be involved in cell surface receptor signaling pathway. Predicted to act upstream of or within positive regulation of myeloid leukocyte differentiation. Located in extracellular exosome.

Immunogen Information

Gene ID

9398

Swiss Prot

Q93033

Immunogen

Recombinant fusion protein containing a sequence corresponding to amino acids 21-410 of human CD101/IGSF2 (NP_004249.2).

Synonyms

V7; IGSF2; EWI-101

Contact

☎ | 400-999-6126

✉ | cn.market@abclonal.com.cn

🌐 | www.abclonal.com.cn

Product Information

Source

Rabbit

Isotype

IgG

Purification

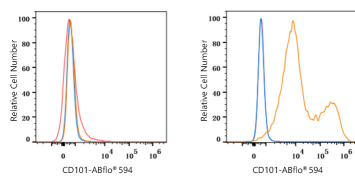
Affinity purification

Storage

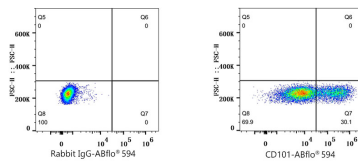
Store at 2-8°C. Avoid freeze.

Buffer: PBS with 0.03% proclin300,0.2% BSA,pH7.3.

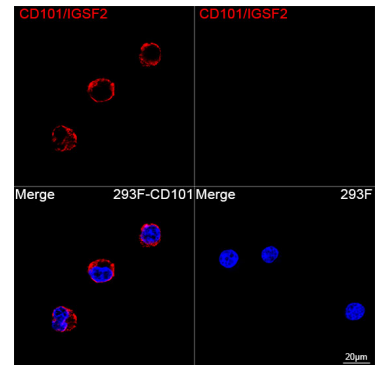
Validation Data



Flow cytometry: 1×10^6 293F cells (negative control, left) and 293F (Transfection, right) cells were surface-stained with ABflo® 594 Rabbit anti-Human CD101/IGSF2 mAb (A24958, 5 μ l/Test, orange line) or ABflo® 594 Rabbit IgG isotype control (A23821, 5 μ l/Test, blue line). Non-fluorescently stained cells were used as blank control (red line).



Flow cytometry: 1×10^6 293F (Transfection) cells were surface-stained with ABflo® 594 Rabbit IgG isotype control (A23821, 5 μ l/Test, left) or ABflo® 594 Rabbit anti-Human CD101/IGSF2 mAb (A24958, 5 μ l/Test, right).



Confocal imaging of 293F cells transfected with CD101 using ABflo® 594 Rabbit anti-Human CD101/IGSF2 mAb (A24958, dilution 1:100). DAPI was used for nuclear staining (Blue). Objective: 100x.