

PE Rabbit anti-Human/Monkey CD16 mAb

Catalog No.: A24974

Basic Information

Observed MW

Refer to figures

Calculated MW

29KDa/26KDa

Category

Primary antibody

Applications

FC

Cross-Reactivity

Human, Cynomolgus

CloneNo number

ARC59985

Conjugate

PE. Ex:565nm. Em:574nm.

Recommended Dilutions

FC 5 µl per 10⁶ cells in
100 µl volume

Background

This gene encodes a receptor for the Fc portion of immunoglobulin G, and it is involved in the removal of antigen-antibody complexes from the circulation, as well as other responses, including antibody dependent cellular mediated cytotoxicity and antibody dependent enhancement of virus infections. This gene (FCGR3A) is highly similar to another nearby gene (FCGR3B) located on chromosome 1. The receptor encoded by this gene is expressed on natural killer (NK) cells as an integral membrane glycoprotein anchored through a transmembrane peptide, whereas FCGR3B is expressed on polymorphonuclear neutrophils (PMN) where the receptor is anchored through a phosphatidylinositol (PI) linkage. Mutations in this gene are associated with immunodeficiency 20, and have been linked to susceptibility to recurrent viral infections, susceptibility to systemic lupus erythematosus, and alloimmune neonatal neutropenia. Alternatively spliced transcript variants encoding different isoforms have been found for this gene.

Immunogen Information

Gene ID

2214/2215

Swiss Prot

P08637/O75015

Immunogen

Recombinant protein (or fragment). This information is considered to be commercially sensitive.

Synonyms

CD16; FCG3; CD16A; FCGR3; IGFR3; IMD20; FCR-10; FCRIII; CD16-II; FCGRIII; FCRIIIA; FcGRIIIA; CD16b

Contact

 | 400-999-6126 | cn.market@abclonal.com.cn | www.abclonal.com.cn

Product Information

Source

Rabbit

Isotype

IgG

Purification

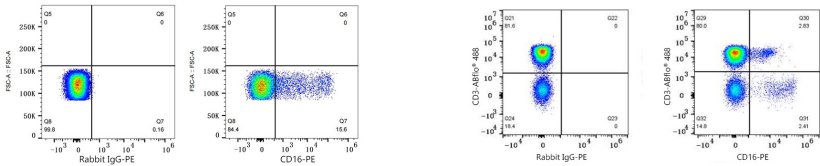
Affinity purification

Storage

Store at 2-8°C. Avoid freeze.

Buffer: PBS containing 0.2% BSA, preserved with proclin300 or sodium azide (as specified on the Certificate of Analysis), pH 7.3.

Validation Data



Flow cytometry: 1X10⁶ Human PBMC were surface-stained with PE Rabbit IgG isotype control (5 µl/Test,left) or PE Rabbit anti-Human CD16 mAb (A24974,5 µl/Test,right).

Flow cytometry:1X10⁶ Cynomolgus PBMC were surface-stained with ABflo® 488 Rabbit anti-Human/Monkey CD3 mAb (A26283,5 µl/Test) and PE Rabbit IgG isotype control (A24172,5 µl/Test,left) or PE Rabbit anti-Human/Monkey CD16 mAb (A26974,5 µl/Test,right). Cells in the lymphocyte gate were used for analysis.