

ABflo® 594 Rabbit anti-Human CD16 mAb

Catalog No.: A24975

Basic Information

Observed MW

Refer to figures

Calculated MW

29KDa/26KDa

Category

Primary antibody

Applications

FC

Cross-Reactivity

Human

CloneNo number

ARC59985-ABflo594

Conjugate

ABflo® 594. Ex:588nm. Em:604nm.

Recommended Dilutions

FC 5 µl per 10⁶ cells in
100 µl volume

Background

This gene encodes a receptor for the Fc portion of immunoglobulin G, and it is involved in the removal of antigen-antibody complexes from the circulation, as well as other responses, including antibody dependent cellular mediated cytotoxicity and antibody dependent enhancement of virus infections. This gene (FCGR3A) is highly similar to another nearby gene (FCGR3B) located on chromosome 1. The receptor encoded by this gene is expressed on natural killer (NK) cells as an integral membrane glycoprotein anchored through a transmembrane peptide, whereas FCGR3B is expressed on polymorphonuclear neutrophils (PMN) where the receptor is anchored through a phosphatidylinositol (PI) linkage. Mutations in this gene are associated with immunodeficiency 20, and have been linked to susceptibility to recurrent viral infections, susceptibility to systemic lupus erythematosus, and alloimmune neonatal neutropenia. Alternatively spliced transcript variants encoding different isoforms have been found for this gene.

Immunogen Information

Gene ID
2214/2215

Swiss Prot
P08637/O75015

Immunogen

Recombinant fusion protein containing a sequence corresponding to amino acids 20-208 of human FCGR3A/FCGR3B (P08637/O75015).


Synonyms

CD16; FCG3; CD16A; FCGR3; IGFR3; IMD20; FCR-10; FCRIII; CD16-II; FCGRIII; FCRIIIA; FcGRIIIA; CD16b

Contact

 | 400-999-6126

 | cn.market@abclonal.com.cn

 | www.abclonal.com.cn

Product Information

Source
Rabbit

Isotype
IgG

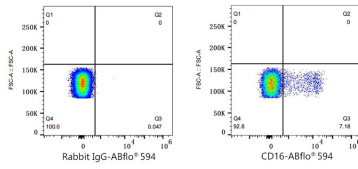
Purification
Affinity purification

Storage

Store at 2-8°C. Avoid freeze.

Buffer: PBS with 0.03% proclin300,0.2% BSA,pH7.3.

Validation Data



Flow cytometry: 1X10⁶ Human PBMC were surface-stained with ABflo® 594 Rabbit IgG isotype control (A23821,5 µl/Test,left) or ABflo® 594 Rabbit anti-Human CD16 mAb (A24975,5 µl/Test,right).