

CD150/SLAM Rabbit mAb

Catalog No.: A24977 **Recombinant**

Basic Information

Observed MW

Calculated MW

38kDa

Category

Primary antibody

Applications

FC

Cross-Reactivity

Mouse

CloneNo number

ARC64802

Background

Enables identical protein binding activity and signaling receptor activity. Involved in natural killer cell activation; positive regulation of activated T cell proliferation; and regulation of cytokine production. Acts upstream of or within several processes, including leukocyte chemotaxis involved in inflammatory response; positive regulation of leukocyte chemotaxis; and regulation of vesicle fusion. Located in external side of plasma membrane and phagocytic vesicle. Is expressed in liver lobe. Orthologous to human SLAMF1 (signaling lymphocytic activation molecule family member 1).

Recommended Dilutions

FC 1:100 - 1:500

Immunogen Information

Gene ID

27218

Swiss Prot

Q9QUM4

Immunogen

Recombinant fusion protein containing a sequence corresponding to amino acids 25-242 of mouse CD150/SLAM (NP_038758.2).

Synonyms

Slam; CD150; IPO-3; CDw150; ESTM51; 4933415F16; CD150/SLAM

Contact

☎ | 400-999-6126

✉ | cn.market@abclonal.com.cn

🌐 | www.abclonal.com.cn

Product Information

Source

Rabbit

Isotype

IgG

Purification

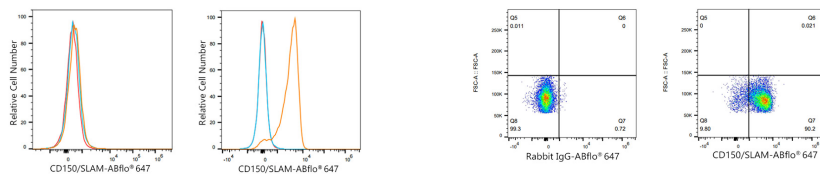
Affinity purification

Storage

Store at -20°C. Avoid freeze / thaw cycles.

Buffer: PBS with 0.05% proclin300,0.05% BSA,50% glycerol,pH7.3.

Validation Data



Flow cytometry: 1×10^6 C2C12 cells (negative control, left) and mouse thymocytes (right) were surface-stained with CD150/SLAM Rabbit mAb (A24977, $2 \mu\text{g}/\text{mL}$, orange line) or ABflo® 647 Rabbit IgG isotype control (A22070, $5 \mu\text{l}/\text{Test}$, blue line), followed by Alexa Fluor® 647 conjugated goat anti-rabbit pAb staining. Non-fluorescently stained cells were used as blank control (red line).

Flow cytometry: 1×10^6 mouse thymocytes were surface-stained with ABflo® 647 Rabbit IgG isotype control (A22070, $5 \mu\text{l}/\text{Test}$, left) or CD150/SLAM Rabbit mAb (A24977, $2 \mu\text{g}/\text{mL}$, right).