

ABflo® 647 Rabbit anti-Human NG2/CSPG4 mAb

Catalog No.: A24979

Basic Information

Observed MW

Calculated MW

251kDa

Category

Primary antibody

Applications

FC

Cross-Reactivity

Human

CloneNo number

ARC64580

Conjugate

ABflo® 647. Ex:648nm. Em:664nm.

Background

A human melanoma-associated chondroitin sulfate proteoglycan plays a role in stabilizing cell-substratum interactions during early events of melanoma cell spreading on endothelial basement membranes. CSPG4 represents an integral membrane chondroitin sulfate proteoglycan expressed by human malignant melanoma cells.

Recommended Dilutions

FC 5 µl per 10⁶ cells in
100 µl volume

Immunogen Information

Gene ID

1464

Swiss Prot

Q6UVK1

Immunogen

Recombinant protein (or fragment). This information is considered to be commercially sensitive.

Synonyms

NG2; MCSP; MCSPG; MSK16; CSPG4A; HMW-MAA; MEL-CSPG

Contact

☎ | 400-999-6126

✉ | cn.market@abclonal.com.cn

🌐 | www.abclonal.com.cn

Product Information

Source

Rabbit

Isotype

IgG

Purification

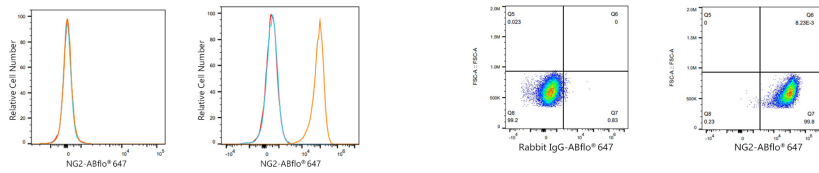
Affinity purification

Storage

Store at 2-8°C. Avoid freeze.

Buffer: PBS containing 0.2% BSA, preserved with proclin300 or sodium azide (as specified on the Certificate of Analysis), pH 7.3.

Validation Data



Flow cytometry: 1×10^6 Jurkat cells (negative control, left) and SK-MEL-28 (right) cells were surface-stained with ABflo® 647 Rabbit anti-Human NG2 mAb (A24979, 5 μ l/Test, orange line) or ABflo® 647 Rabbit IgG isotype control (A22070, 5 μ l/Test, blue line). Non-fluorescently stained cells were used as blank control (red line).

Flow cytometry: 1×10^6 SK-MEL-28 cells were surface-stained with ABflo® 647 Rabbit IgG isotype control (A22070, 5 μ l/Test, left) or ABflo® 647 Rabbit anti-Human NG2 mAb (A24979, 5 μ l/Test, right).