

# ABflo® 647 Rabbit anti-Human CD8b mAb

Catalog No.: A24987

## Basic Information

### Observed MW

### Calculated MW

24kDa

### Category

Primary antibody

### Applications

FC

### Cross-Reactivity

Human

### CloneNo number

ARC64469-ABflo647

### Conjugate

ABflo® 647. Ex:648nm. Em:664nm.

## Recommended Dilutions

FC 5 µl per 10<sup>6</sup> cells in  
100 µl volume

## Background

The CD8 antigen is a cell surface glycoprotein found on most cytotoxic T lymphocytes that mediates efficient cell-cell interactions within the immune system. The CD8 antigen, acting as a coreceptor, and the T-cell receptor on the T lymphocyte recognize antigens displayed by an antigen presenting cell (APC) in the context of class I MHC molecules. The functional coreceptor is either a homodimer composed of two alpha chains, or a heterodimer composed of one alpha and one beta chain. Both alpha and beta chains share significant homology to immunoglobulin variable light chains. This gene encodes the CD8 beta chain isoforms. Multiple alternatively spliced transcript variants encoding distinct membrane associated or secreted isoforms have been described. A pseudogene, also located on chromosome 2, has been identified.

## Immunogen Information

### Gene ID

926

### Swiss Prot

P10966

### Immunogen

Recombinant fusion protein containing a sequence corresponding to amino acids 22-170 of human CD8b (NP\_004922.1).

### Synonyms

LY3; P37; LEU2; LYT3; Ly-3; CD8B1; CD8beta

## Contact

☎ | 400-999-6126

✉ | [cn.market@abclonal.com.cn](mailto:cn.market@abclonal.com.cn)

🌐 | [www.abclonal.com.cn](http://www.abclonal.com.cn)

## Product Information

### Source

Rabbit

### Isotype

IgG

### Purification

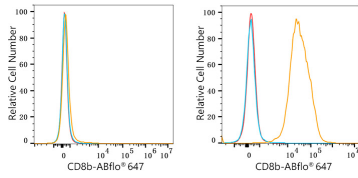
Affinity purification

### Storage

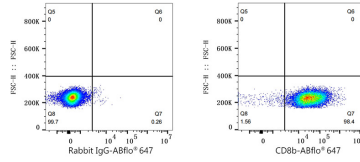
Store at 2-8°C. Avoid freeze.

Buffer: PBS with 0.03% proclin300,0.2% BSA,pH7.3.

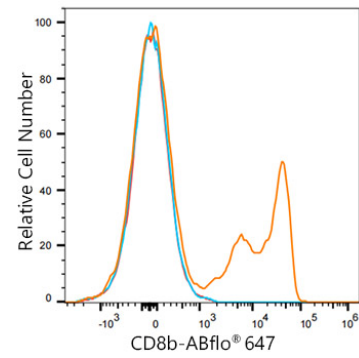
## Validation Data



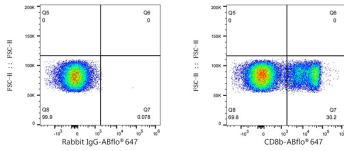
Flow cytometry:  $1 \times 10^6$  293F cells (negative control, left) and 293F (Transfection, right) cells were surface-stained with ABflo® 647 Rabbit anti-Human CD8b mAb (A24987, 5  $\mu$ l/Test, orange line) or ABflo® 647 Rabbit IgG isotype control (A22070, 5  $\mu$ l/Test, blue line). Non-fluorescently stained cells were used as blank control (red line).



Flow cytometry:  $1 \times 10^6$  293F (Transfection) cells were surface-stained with ABflo® 647 Rabbit IgG isotype control (A22070, 5  $\mu$ l/Test, left) or ABflo® 647 Rabbit anti-Human CD8b mAb (A24987, 5  $\mu$ l/Test, right).



Flow cytometry:  $1 \times 10^6$  Human PBMC were surface-stained with ABflo® 647 Rabbit anti-Human CD8b mAb (A24987, 5  $\mu$ l/Test, orange line) or ABflo® 647 Rabbit IgG isotype control (A22070, 5  $\mu$ l/Test, blue line). Non-fluorescently stained Human PBMC were used as blank control (red line).



Flow cytometry:  $1 \times 10^6$  Human PBMC were surface-stained with ABflo® 647 Rabbit IgG isotype control (A22070, 5  $\mu$ l/Test, left) or ABflo® 647 Rabbit anti-Human CD8b mAb (A24987, 5  $\mu$ l/Test, right).