

CD130/gp130 Rabbit mAb

Catalog No.: A24991 **Recombinant**

Basic Information

Observed MW

Calculated MW

102kDa

Category

Primary antibody

Applications

FC

Cross-Reactivity

Mouse

CloneNo number

ARC64569

Background

Contributes to interleukin-11 binding activity and interleukin-11 receptor activity. Involved in interleukin-6-mediated signaling pathway; intestinal epithelial cell development; and positive regulation of Notch signaling pathway. Acts upstream of or within several processes, including glycogen metabolic process; positive regulation of astrocyte differentiation; and regulation of Notch signaling pathway. Located in dendrite; external side of plasma membrane; and neuronal cell body. Is expressed in several structures, including alimentary system; brain; early conceptus; immune system; and reproductive system. Used to study rheumatoid arthritis and stomach cancer. Human ortholog(s) of this gene implicated in arteriosclerosis; hyper IgE recurrent infection syndrome 4; and hyperandrogenism. Orthologous to human IL6ST (interleukin 6 cytokine family signal transducer).

Recommended Dilutions

FC 1:100 - 1:500

Immunogen Information

Gene ID

16195

Swiss Prot

Q00560

Immunogen

Recombinant fusion protein containing a sequence corresponding to amino acids 23-617 of mouse CD130/gp130 (NP_034690.3).

Synonyms

CD130; gp130; D13Ert699e; 5133400A03Rik; CD130/gp130

Contact

☎ | 400-999-6126

✉ | cn.market@abclonal.com.cn

🌐 | www.abclonal.com.cn

Product Information

Source

Rabbit

Isotype

IgG

Purification

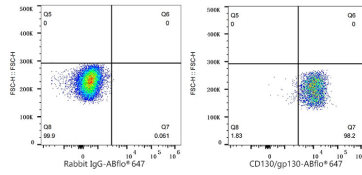
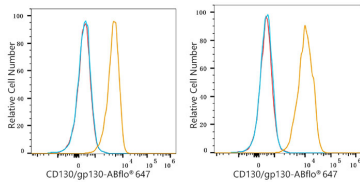
Affinity purification

Storage

Store at -20°C. Avoid freeze / thaw cycles.

Buffer: PBS with 0.05% proclin300,0.05% BSA,50% glycerol,pH7.3.

Validation Data



Flow cytometry: 1×10^6 Neuro-2a cells (Low Expression, left) and NIH/3T3 cells (right) were surface-stained with CD130/gp130 Rabbit mAb (A24991, 2 $\mu\text{g}/\text{mL}$, orange line) or ABflo® 647 Rabbit IgG isotype control (A22070, 5 $\mu\text{l}/\text{Test}$, blue line), followed by Alexa Fluor® 647 conjugated goat anti-rabbit pAb staining. Non-fluorescently stained cells were used as blank control (red line).

Flow cytometry: 1×10^6 NIH/3T3 cells were surface-stained with ABflo® 647 Rabbit IgG isotype control (A22070, 5 $\mu\text{l}/\text{Test}$, left) or CD130/gp130 Rabbit mAb (A24991, 2 $\mu\text{g}/\text{mL}$, right).