

# IL-27RA/WSX-1 Rabbit mAb

Catalog No.: A24994 **Recombinant**

## Basic Information

### Observed MW

### Calculated MW

69kDa

### Category

Primary antibody

### Applications

FC,ELISA

### Cross-Reactivity

Human, Rat

### CloneNo number

ARC59510

## Background

In mice, CD4+ helper T-cells differentiate into type 1 (Th1) cells, which are critical for cell-mediated immunity, predominantly under the influence of IL12. Also, IL4 influences their differentiation into type 2 (Th2) cells, which are critical for most antibody responses. Mice deficient in these cytokines, their receptors, or associated transcription factors have impaired, but are not absent of, Th1 or Th2 immune responses. This gene encodes a protein which is similar to the mouse T-cell cytokine receptor Tccr at the amino acid level, and is predicted to be a glycosylated transmembrane protein.

## Recommended Dilutions

**FC** 1:500 - 1:1000

**ELISA** Recommended starting concentration is 1 µg/mL. Please optimize the concentration based on your specific assay requirements.

## Immunogen Information

### Gene ID

9466

### Swiss Prot

Q6UWB1

### Immunogen

Recombinant fusion protein containing a sequence corresponding to amino acids 33-283 of human IL-27RA/WSX-1 (NP\_004834.1).

### Synonyms

CRL1; TCCR; WSX1; IL27R; IL-27RA; zcytor1; IL-27RA/WSX-1

## Contact

☎ | 400-999-6126

✉ | [cn.market@abclonal.com.cn](mailto:cn.market@abclonal.com.cn)

🌐 | [www.abclonal.com.cn](http://www.abclonal.com.cn)

## Product Information

### Source

Rabbit

### Isotype

IgG

### Purification

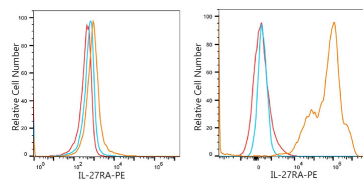
Affinity purification

### Storage

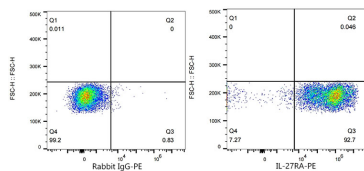
Store at -20°C. Avoid freeze / thaw cycles.

Buffer: PBS with 0.05% proclin300,0.05% BSA,50% glycerol,pH7.3.

## Validation Data



Flow cytometry:  $1 \times 10^6$  293T cells (negative control, left) and 293T (Transfection, right) cells were surface-stained with IL-27RA/WSX-1 Rabbit mAb (A24994, 2  $\mu\text{g}/\text{mL}$ , orange line) or PE Rabbit IgG isotype control (5  $\mu\text{l}/\text{Test}$ , blue line), followed by PE Donkey anti-rabbit Antibody staining. Non-fluorescently stained cells were used as blank control (red line).



Flow cytometry:  $1 \times 10^6$  293T (Transfection) cells were surface-stained with PE Rabbit IgG isotype control (5  $\mu\text{l}/\text{Test}$ , left) or IL-27RA/WSX-1 Rabbit mAb (A24994, 2  $\mu\text{g}/\text{mL}$ , right).