

# MAVS Rabbit mAb

Catalog No.: A25005

Recombinant

1 Publications

## Basic Information

### Observed MW

Refer to figures

### Calculated MW

57kDa

### Category

Primary antibody

### Applications

ELISA, IHC-P, IF/ICC

### Cross-Reactivity

Human, Mouse

### CloneNo number

ARC61547

## Background

This gene encodes an intermediary protein necessary in the virus-triggered beta interferon signaling pathways. It is required for activation of transcription factors which regulate expression of beta interferon and contributes to antiviral innate immunity.

## Recommended Dilutions

IHC-P 1:100 - 1:500

IF/ICC 1:50 - 1:200

## Immunogen Information

### Gene ID

57506

### Swiss Prot

Q7Z434

### Immunogen

A synthetic peptide corresponding to a sequence within amino acids 121-220 of human MAVS mAb (NP\_065797.2).

### Synonyms

IPS1; VISA; IPS-1; CARDIF; MAVS

## Contact

☎ | 400-999-6126

✉ | [cn.market@abclonal.com.cn](mailto:cn.market@abclonal.com.cn)

🌐 | [www.abclonal.com.cn](http://www.abclonal.com.cn)

## Product Information

### Source

Rabbit

### Isotype

IgG

### Purification

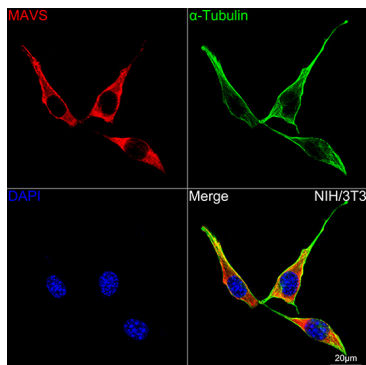
Affinity purification

### Storage

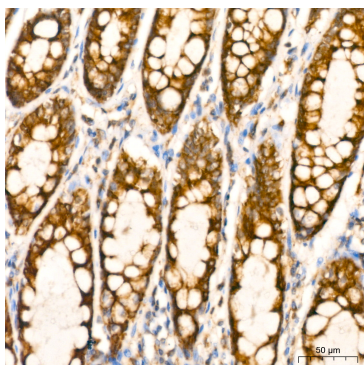
Store at -20°C. Avoid freeze / thaw cycles.

Buffer: PBS with 0.05% proclin300, 0.05% BSA, 50% glycerol, pH7.3.

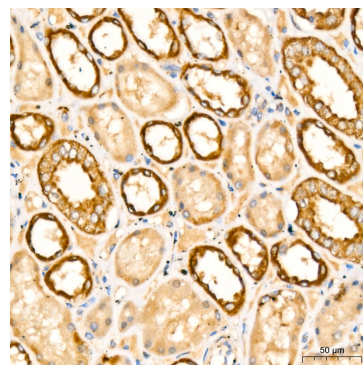
## Validation Data



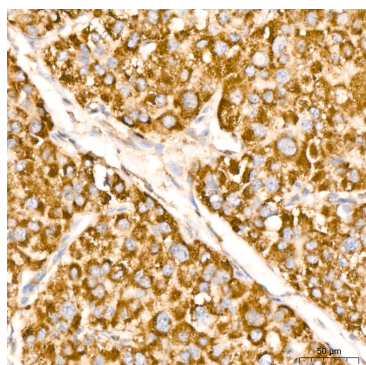
Confocal imaging of NIH/3T3 cells using MAVS Rabbit mAb (A25005, dilution 1:200) followed by a further incubation with Cy3 Goat Anti-Rabbit IgG (H+L) (AS007, dilution 1:500) (Red). The cells were counterstained with α-Tubulin Mouse mAb (AC012, dilution 1:400) followed by incubation with ABflo® 488-conjugated Goat Anti-Mouse IgG (H+L) Ab (AS076, dilution 1:500) (Green). DAPI was used for nuclear staining (Blue). Objective: 100x.



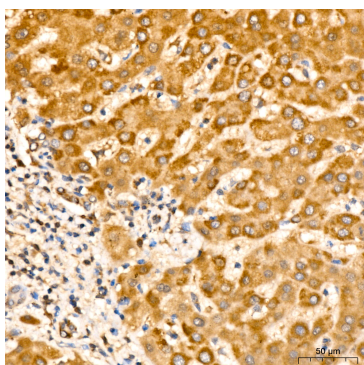
Immunohistochemistry analysis of MAVS in paraffin-embedded human colon tissue using MAVS Rabbit mAb (A25005) at a dilution of 1:300 (40x lens). High pressure antigen retrieval was performed with 0.01 M citrate buffer (pH 6.0) prior to IHC staining.



Immunohistochemistry analysis of MAVS in paraffin-embedded human kidney tissue using MAVS Rabbit mAb (A25005) at a dilution of 1:300 (40x lens). High pressure antigen retrieval was performed with 0.01 M citrate buffer (pH 6.0) prior to IHC staining.



Immunohistochemistry analysis of MAVS in paraffin-embedded human liver cancer tissue using MAVS Rabbit mAb (A25005) at a dilution of 1:300 (40x lens). High pressure antigen retrieval was performed with 0.01 M citrate buffer (pH 6.0) prior to IHC staining.



Immunohistochemistry analysis of MAVS in paraffin-embedded human liver tissue using MAVS Rabbit mAb (A25005) at a dilution of 1:300 (40x lens). High pressure antigen retrieval was performed with 0.01 M citrate buffer (pH 6.0) prior to IHC staining.