

CXCL1 Rabbit mAb

Catalog No.: A25014 **Recombinant**

Basic Information

Observed MW

45kDa

Calculated MW

10kDa

Category

Primary antibody

Applications

ELISA, WB

Cross-Reactivity

Mouse

CloneNo number

ARC65165

Background

This gene encodes a protein that is a member of the CXC subfamily of chemokines. Chemokines, which recruit and activate leukocytes, are classified by function (inflammatory or homeostatic) or by structure. This secretory protein is proposed to bind the G-protein coupled receptor chemokine (C-X-C motif) receptor 2 to recruit neutrophils. In mouse, deficiency of this gene is associated with colitis and with defects in immune cell recruitment to the lung.

Recommended Dilutions

WB 1:500 - 1:1000

Immunogen Information

Gene ID

14825

Swiss Prot

P12850

Immunogen

Recombinant fusion protein containing a sequence corresponding to amino acids 25-96 of mouse CXCL1(NP_032202.1).

Synonyms

KC; Fsp; N51; gro; Gro1; Mgsa; Scyb1; CXCL1

Contact

 | 400-999-6126

 | cn.market@abclonal.com.cn

 | www.abclonal.com.cn

Product Information

Source

Rabbit

Isotype

IgG

Purification

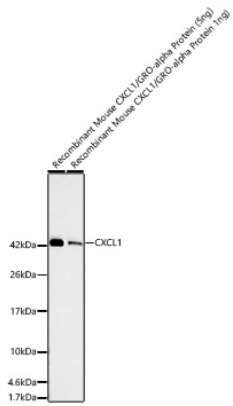
Affinity purification

Storage

Store at -20°C. Avoid freeze / thaw cycles.

Buffer: PBS with 0.05% proclin300, 0.05% BSA, 50% glycerol, pH7.3.

Validation Data



Western blot analysis of recombinant mouse CXCL1/GRO-alpha Protein using CXCL1 Rabbit mAb (A25014) at 1:1000 dilution.

Secondary antibody: HRP Goat Anti-Rabbit IgG (H+L) (AS014) at 1:10000 dilution.

Lysates/proteins: 5ng/1ng per lane.

Blocking buffer: 3% nonfat dry milk in TBST.

Detection: ECL Basic Kit (RM00020).

Exposure time: 90s.