

OTC Rabbit mAb

Catalog No.: A25015 **Recombinant**

Basic Information

Observed MW

40kDa

Calculated MW

40kDa

Category

Primary antibody

Applications

ELISA, WB, IF/ICC

Cross-Reactivity

Human, Mouse, Rat

CloneNo number

ARC65231

Background

This nuclear gene encodes a mitochondrial matrix enzyme. The encoded protein is involved in the urea cycle which functions to detoxify ammonia into urea for excretion. Mutations in this enzyme lead to ornithine transcarbamylase deficiency, which causes hyperammonemia.

Recommended Dilutions

WB 1:1000 - 1:5000

IF/ICC 1:50 - 1:200

Immunogen Information

Gene ID

5009

Swiss Prot

P00480

Immunogen

Recombinant fusion protein containing a sequence corresponding to amino acids 215-354 of human OTC (NP_000522.3).

Synonyms

OCTD; OTC1; OTCD; OTCase; OTC

Contact

☎ | 400-999-6126

✉ | cn.market@abclonal.com.cn

🌐 | www.abclonal.com.cn

Product Information

Source

Rabbit

Isotype

IgG

Purification

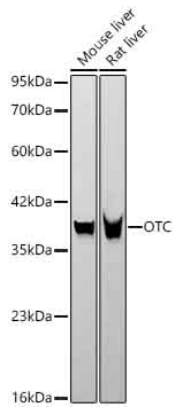
Affinity purification

Storage

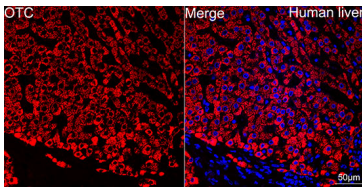
Store at -20°C. Avoid freeze / thaw cycles.

Buffer: PBS with 0.05% proclin300, 0.05% BSA, 50% glycerol, pH7.3.

Validation Data



Western blot analysis of various lysates using OTC Rabbit mAb (A25015) at 1:3000 dilution.
Secondary antibody: HRP Goat Anti-Rabbit IgG (H+L) (AS014) at 1:10000 dilution.
Lysates/proteins: 25ug per lane.
Blocking buffer: 3% nonfat dry milk in TBST.
Detection: ECL Basic Kit (RM00020).
Exposure time: 30s.



Confocal imaging of paraffin-embedded Human liver using OTC Rabbit mAb (A25015, dilution 1:200) followed by a further incubation with Cy3 Goat Anti-Rabbit IgG (H+L) (AS007, dilution 1:500) (Red). DAPI was used for nuclear staining (Blue). Objective: 40x. Perform high pressure antigen retrieval with 0.01M citrate buffer (pH 6.0) prior to IF staining.