

TIMM17B Rabbit mAb

Catalog No.: A25016 **Recombinant**

Basic Information

Observed MW

18kDa

Calculated MW

18kDa

Category

Primary antibody

Applications

ELISA, WB

Cross-Reactivity

Human, Mouse, Rat

CloneNo number

ARC65362

Background

This gene encodes a multipass transmembrane protein that forms an integral component of the mitochondrial translocase TIM23 complex. This complex facilitates the transport of mitochondrial proteins from the cytosol across the mitochondrial inner membrane and into the mitochondrion. There is a pseudogene for this gene on chromosome 12. Alternative splicing results in multiple transcript variants.

Recommended Dilutions

WB 1:1000 - 1:5000

Immunogen Information

Gene ID

10245

Swiss Prot

O60830

Immunogen

A synthetic peptide corresponding to a sequence within amino acids 60-160 of human TIMM17B (NP_005825.1).

Synonyms

JM3; TIM17B; DXS9822; TIMM17B

Contact

☎ | 400-999-6126

✉ | cn.market@abclonal.com.cn

🌐 | www.abclonal.com.cn

Product Information

Source

Rabbit

Isotype

IgG

Purification

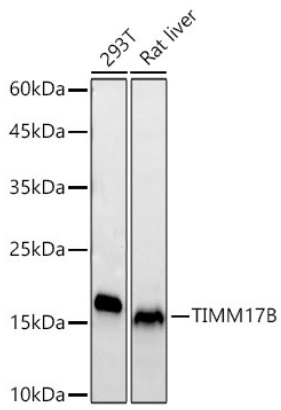
Affinity purification

Storage

Store at -20°C. Avoid freeze / thaw cycles.

Buffer: PBS with 0.05% proclin300, 0.05% BSA, 50% glycerol, pH7.3.

Validation Data



Western blot analysis of various lysates using TIMM17B Rabbit mAb (A25016) at 1:3000 dilution.
Secondary antibody: HRP Goat Anti-Rabbit IgG (H+L) (AS014) at 1:10000 dilution.
Lysates/proteins: 25ug per lane.
Blocking buffer: 3% nonfat dry milk in TBST.
Detection: ECL Basic Kit (RM00020).
Exposure time: 30s.