

SLC25A11 Rabbit pAb

Catalog No.: A25022 **1 Publications**

Basic Information

Observed MW

34kDa

Calculated MW

34kDa

Category

Primary antibody

Applications

ELISA, WB

Cross-Reactivity

Human, Mouse

Background

The oxoglutarate/malate carrier transports 2-oxoglutarate across the inner membranes of mitochondria in an electroneutral exchange for malate or other dicarboxylic acids (summary by Iacobazzi et al., 1992)

Recommended Dilutions

WB 1:500 - 1:1000

Immunogen Information

Gene ID

8402

Swiss Prot

Q02978

Immunogen

A synthetic peptide corresponding to a sequence within amino acids 1-100 of human SLC25A11(NP_003553.2).

Synonyms

OGC; PGL6; SLC20A4; SLC25A11

Contact

☎ | 400-999-6126

✉ | cn.market@abclonal.com.cn

🌐 | www.abclonal.com.cn

Product Information

Source

Rabbit

Isotype

IgG

Purification

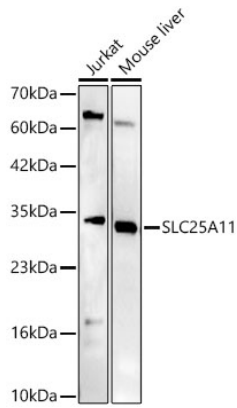
Affinity purification

Storage

Store at -20°C. Avoid freeze / thaw cycles.

Buffer: PBS with 0.05% proclin300, 50% glycerol, pH7.3.

Validation Data



Western blot analysis of various lysates using SLC25A11 Rabbit pAb (A25022) at 1:1000 dilution.
Secondary antibody:HRP Goat Anti-Rabbit IgG (H+L)(AS014) at 1:10000 dilution.
Lysates / proteins: 25 µg per lane.
Blocking buffer: 3 % nonfat dry milk in TBST.
Detection:ECL Basic Kit (RM00020).
Exposure time: 45s.