

# Thyroid Stimulating Hormone (TSH) Rabbit pAb

Catalog No.: A25026

## Basic Information

### Observed MW

Refer to figures

### Calculated MW

13KDa/15KDa

### Category

Primary antibody

### Applications

IHC-P, ELISA

### Cross-Reactivity

Mouse

## Background

The four human glycoprotein hormones chorionic gonadotropin (CG), luteinizing hormone (LH), follicle stimulating hormone (FSH), and thyroid stimulating hormone (TSH) are dimers consisting of alpha and beta subunits that are associated noncovalently. The alpha subunits of these hormones are identical, however, their beta chains are unique and confer biological specificity. The protein encoded by this gene is the alpha subunit and belongs to the glycoprotein hormones alpha chain family. Two transcript variants encoding different isoforms have been found for this gene. The four human glycoprotein hormones chorionic gonadotropin (CG), luteinizing hormone (LH), follicle stimulating hormone (FSH), and thyroid stimulating hormone (TSH) are dimers consisting of alpha and beta subunits that are associated noncovalently. The alpha subunits of these hormones are identical, however, their beta chains are unique and confer biological specificity. Thyroid stimulating hormone functions in the control of thyroid structure and metabolism. The protein encoded by this gene is the beta subunit of thyroid stimulating hormone. Mutations in this gene are associated with congenital central and secondary hypothyroidism and Hashimoto's thyroiditis. Alternative splicing of this gene results in multiple transcript variants.

## Recommended Dilutions

**IHC-P** 1:50 - 1:200

**ELISA** Recommended starting concentration is 1 µg/mL. Please optimize the concentration based on your specific assay requirements.

## Immunogen Information

### Gene ID

1081/7252

### Swiss Prot

P01215/P01222

### Immunogen

Recombinant protein (or fragment). This information is considered to be commercially sensitive.

### Synonyms

HCG; LHA; FSHA; GPA1; GPHa; TSHA; GPHA1; CG-ALPHA; TSH-B; TSH-BETA; Thyroid Stimulating Hormone (TSH)

## Contact

☎ | 400-999-6126

✉ | [cn.market@abclonal.com.cn](mailto:cn.market@abclonal.com.cn)

🌐 | [www.abclonal.com.cn](http://www.abclonal.com.cn)

## Product Information

### Source

Rabbit

### Isotype

IgG

### Purification

Affinity purification

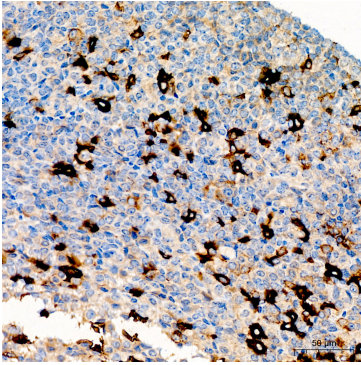
### Storage

Store at -20°C. Avoid freeze / thaw cycles.

Buffer: PBS containing 50% glycerol, preserved with proclin300 or sodium azide (as specified on the Certificate of Analysis), pH 7.3.

## Validation Data

---



Immunohistochemistry analysis of paraffin-embedded Mouse pituitary tissue using Thyroid Stimulating Hormone (TSH) Rabbit pAb (A25026) at a dilution of 1:100 (40x lens). High pressure antigen retrieval was performed with 0.01 M Tris-EDTA buffer (pH 9.0) prior to IHC staining.